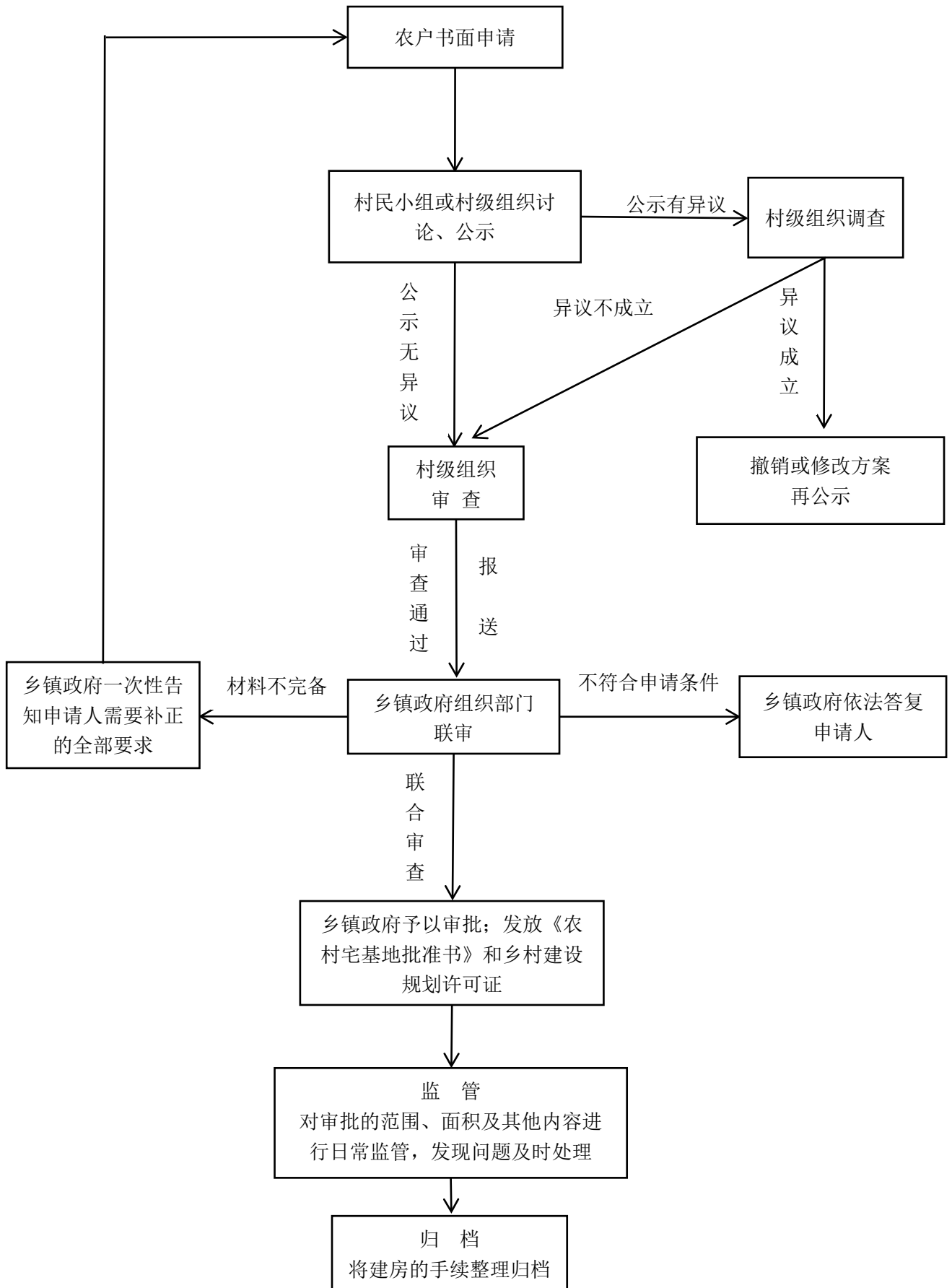
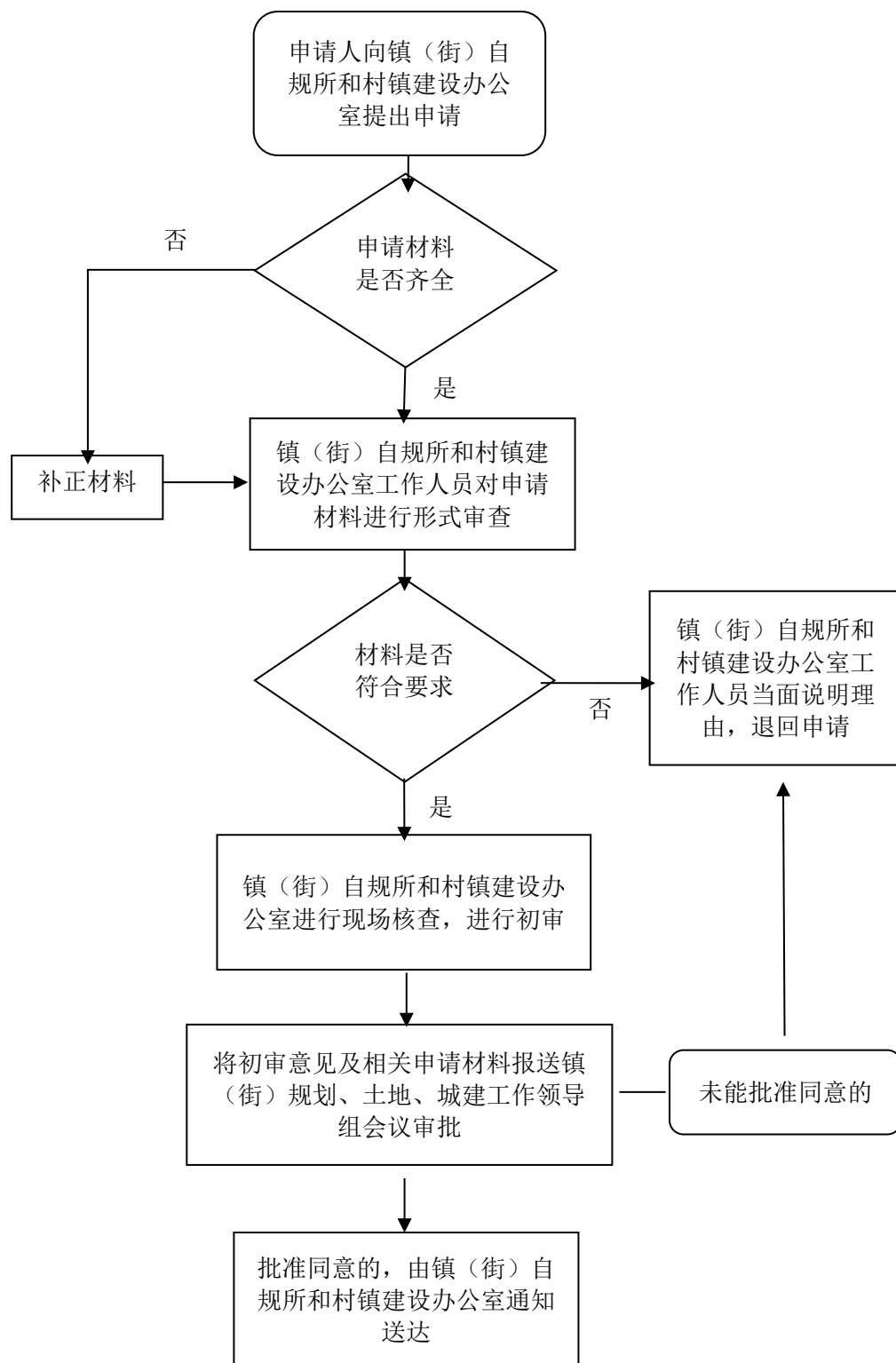


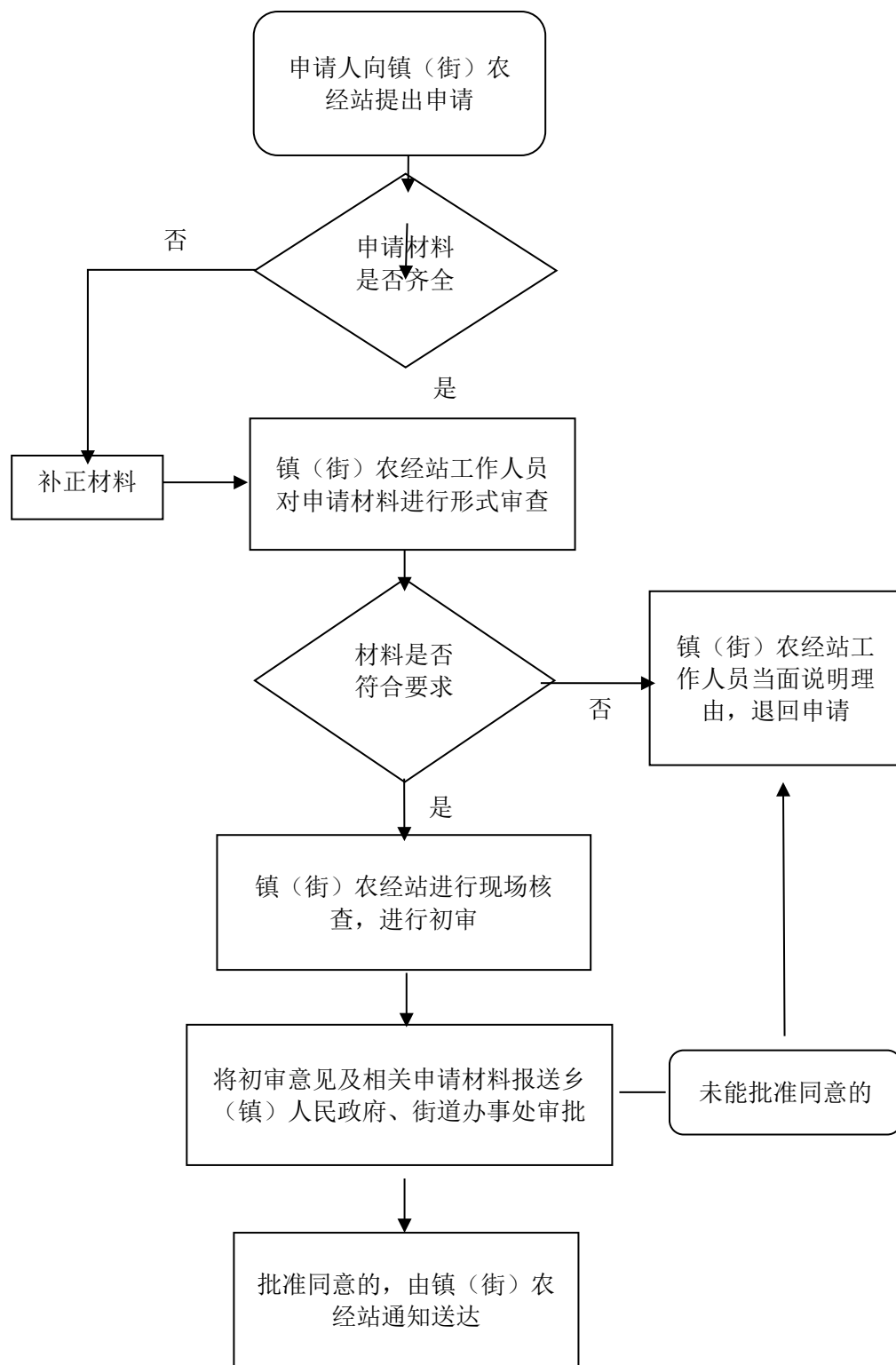
《农村宅基地批准书》和乡村建设规划许可证（使用原有宅基地和其他非农用地）核发流程图



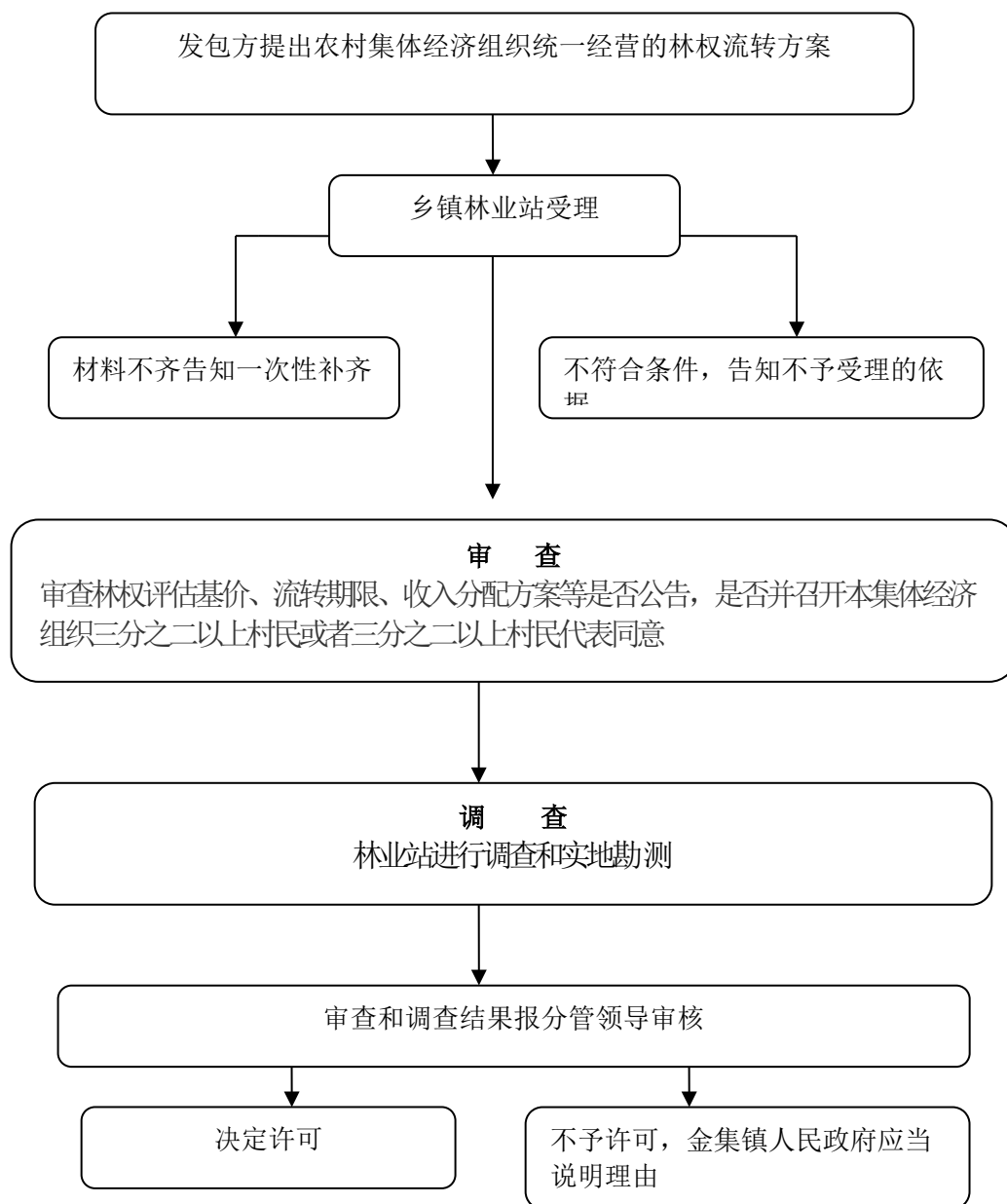
在村庄、集镇规划区修建临时建筑物、构筑物和其他设施的批准流程图



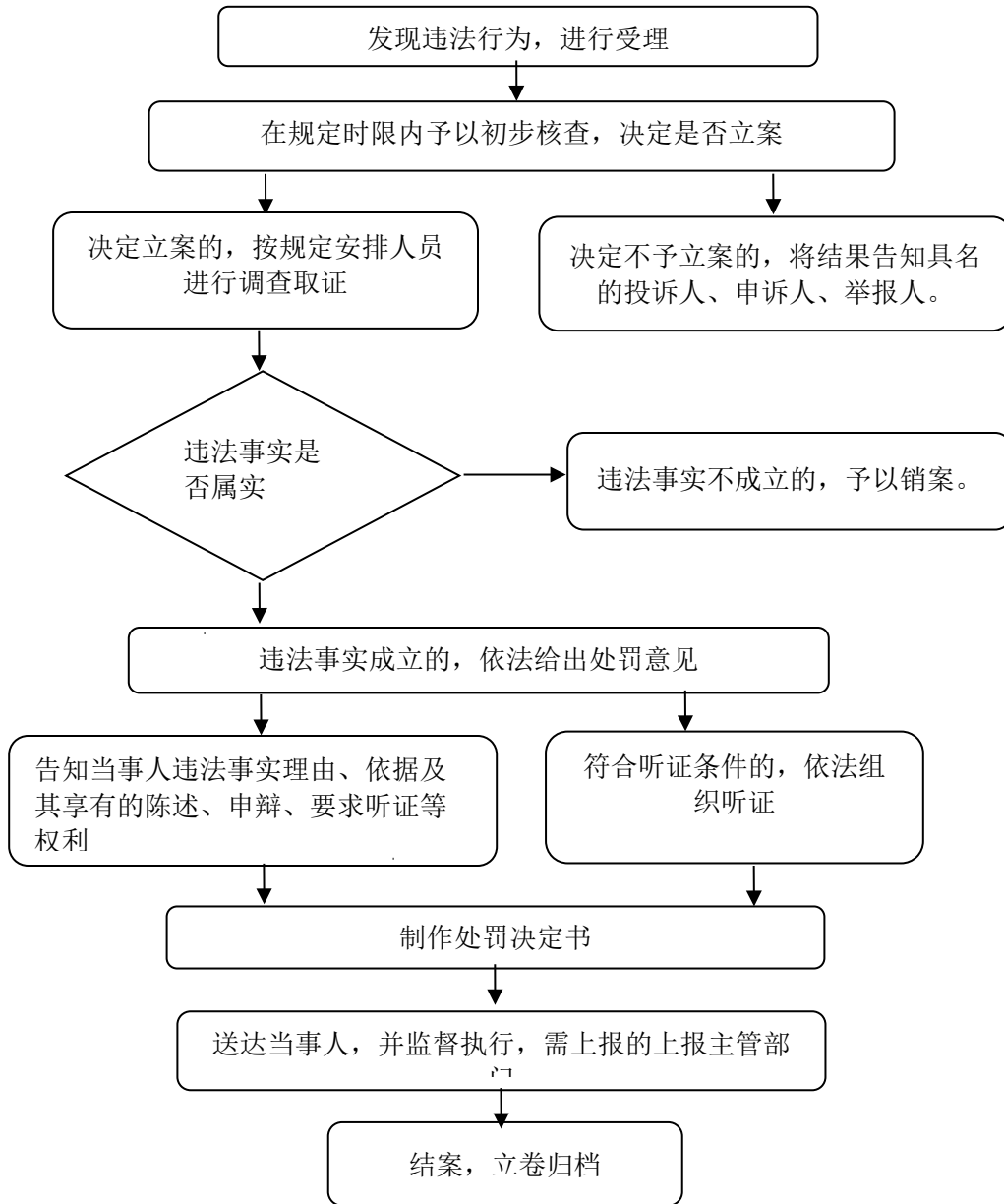
农民集体所有土地由本集体经济组织以外的单位或者个人承包经营的审批流程图



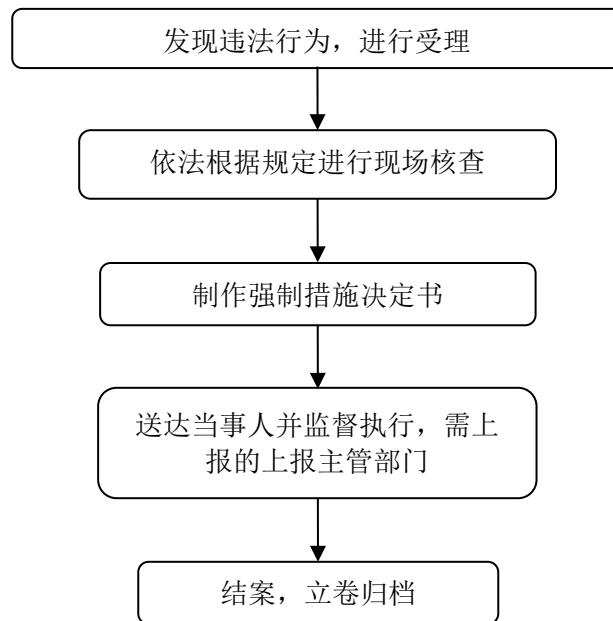
农村集体经济组织统一经营的林权流转给本集体经济组织以外的单位和个人流转方案批准流程图



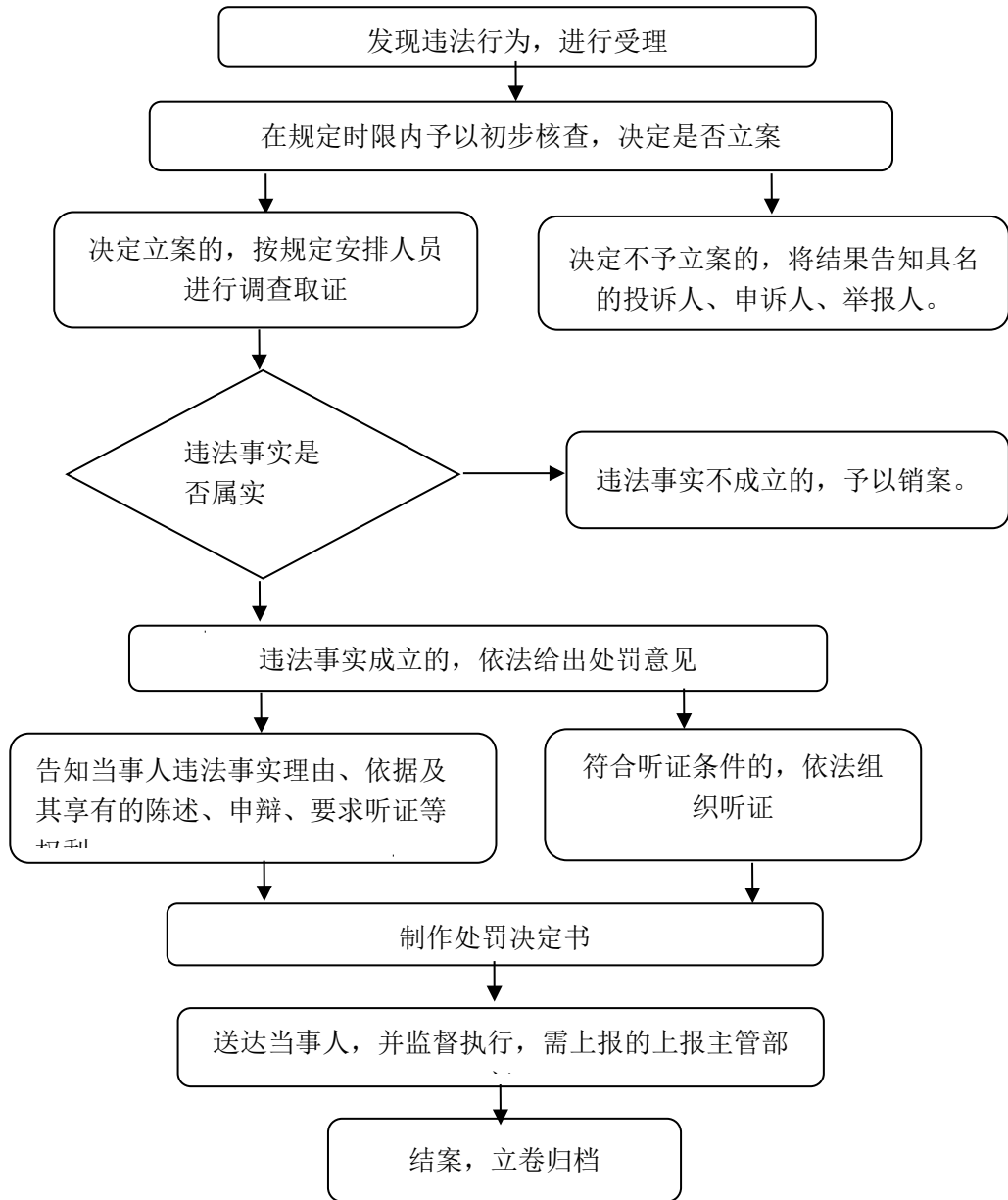
对渣土车等运输车辆遗撒、泄露物料等行为的处罚流程图



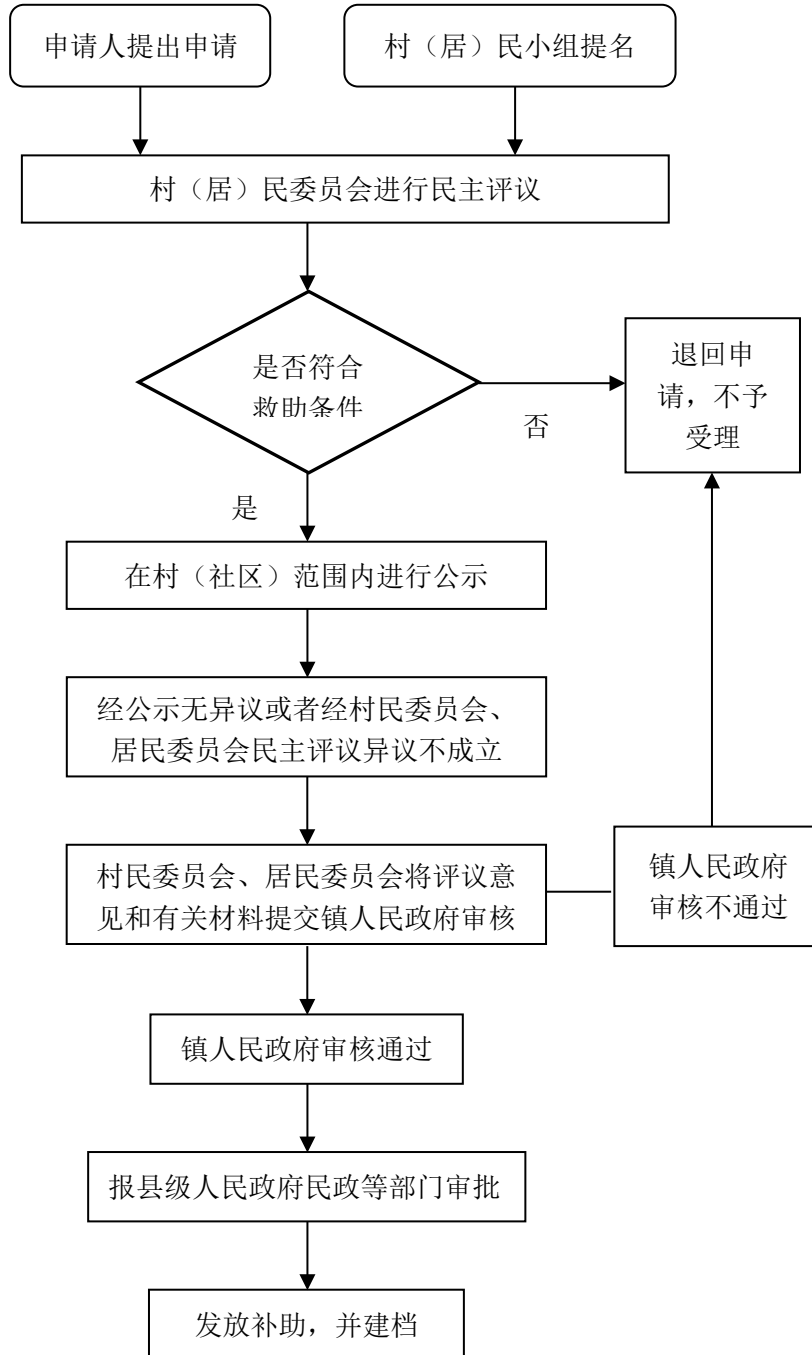
对未依法取得乡村建设规划许可证或未按乡村建设规划许可证建设的处罚(办事流程图)



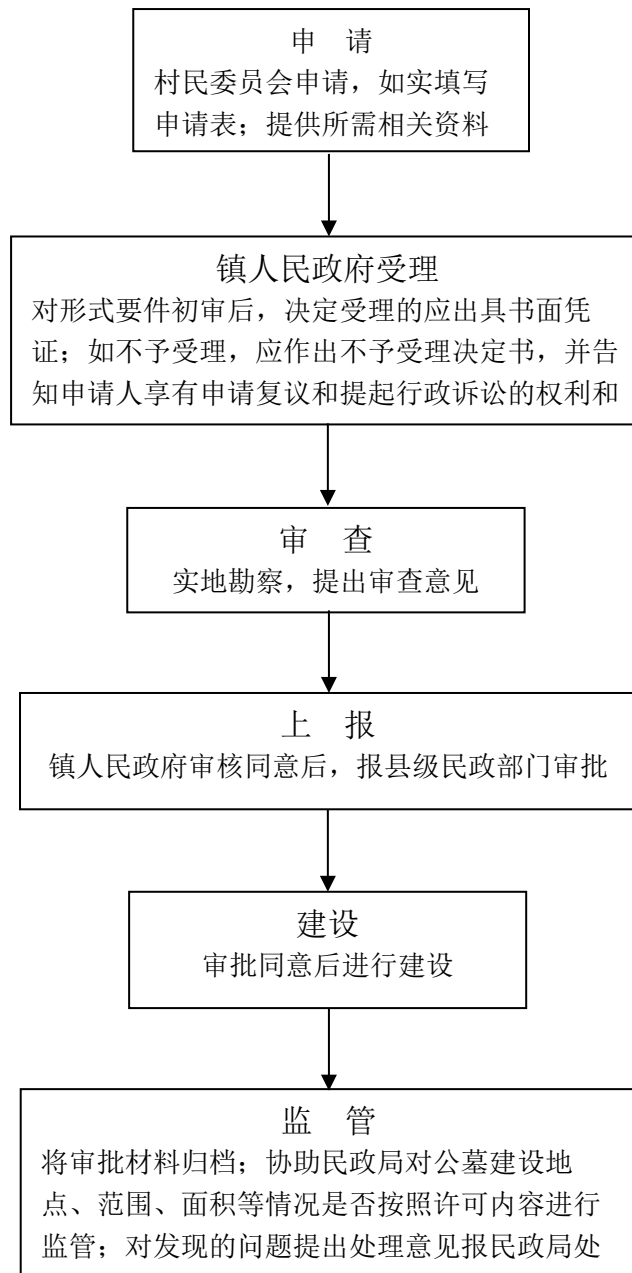
对损坏村庄和集镇的房屋、公共设施，破坏村容镇貌和环境 卫生的处罚



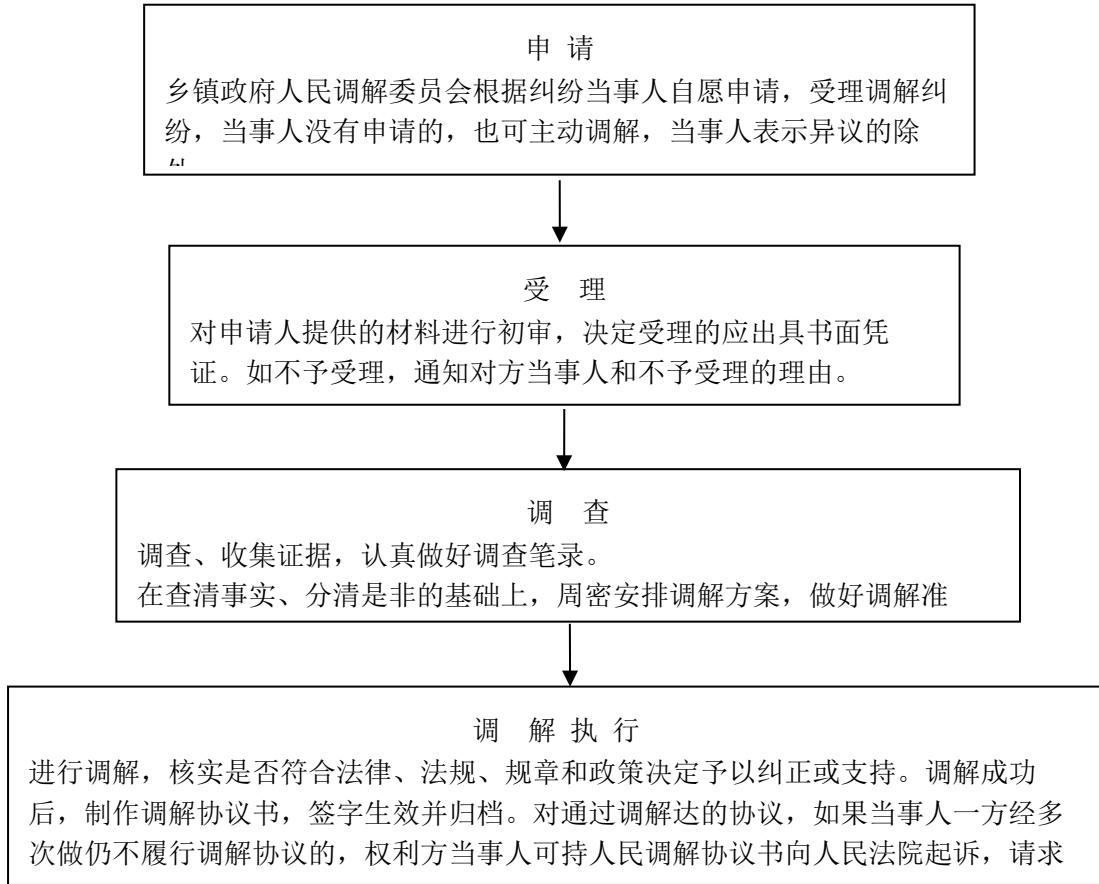
自然灾害生活救助对象审核转报流程图



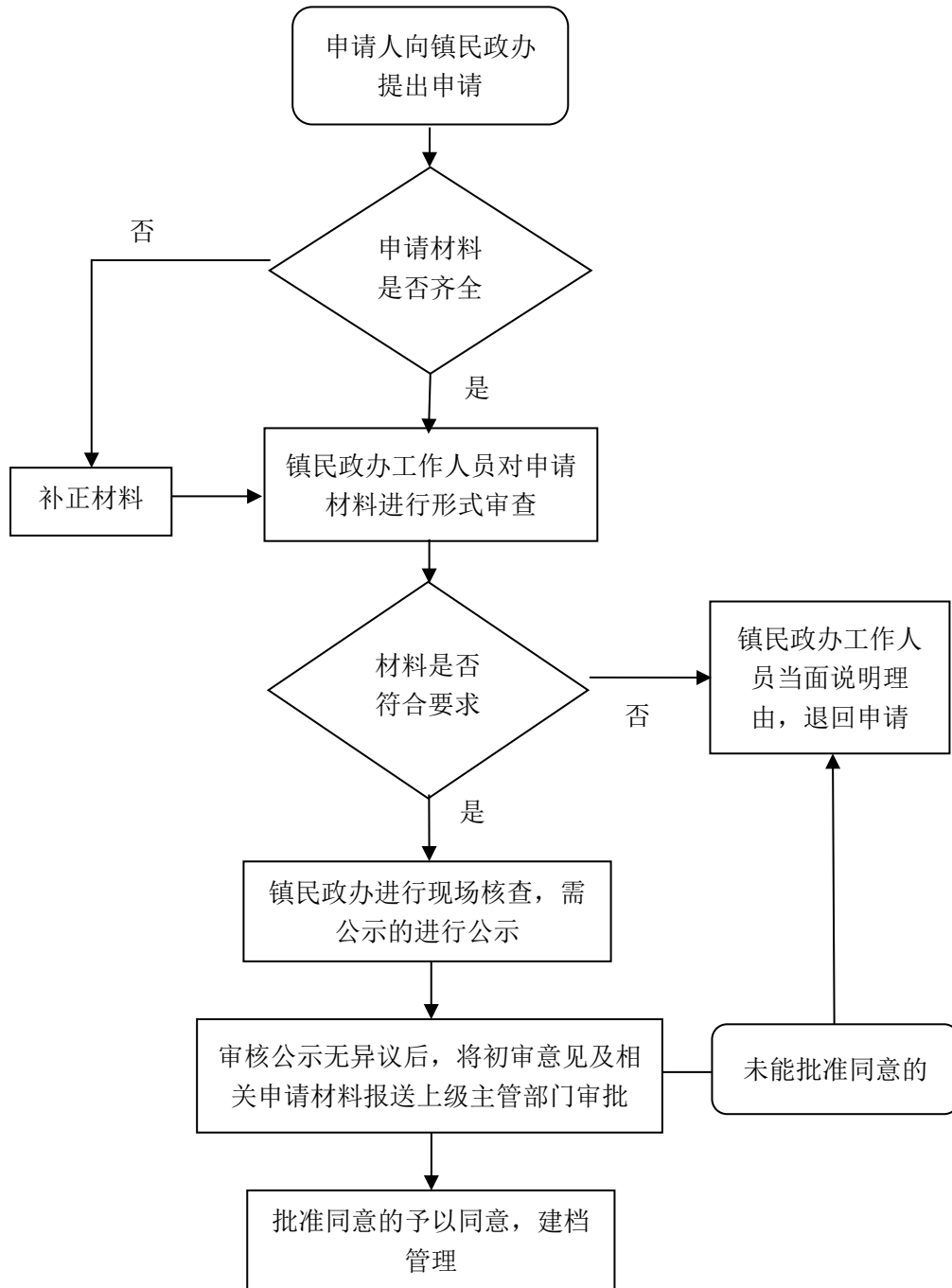
农村为村民设置公益性墓地的审核转报流程图



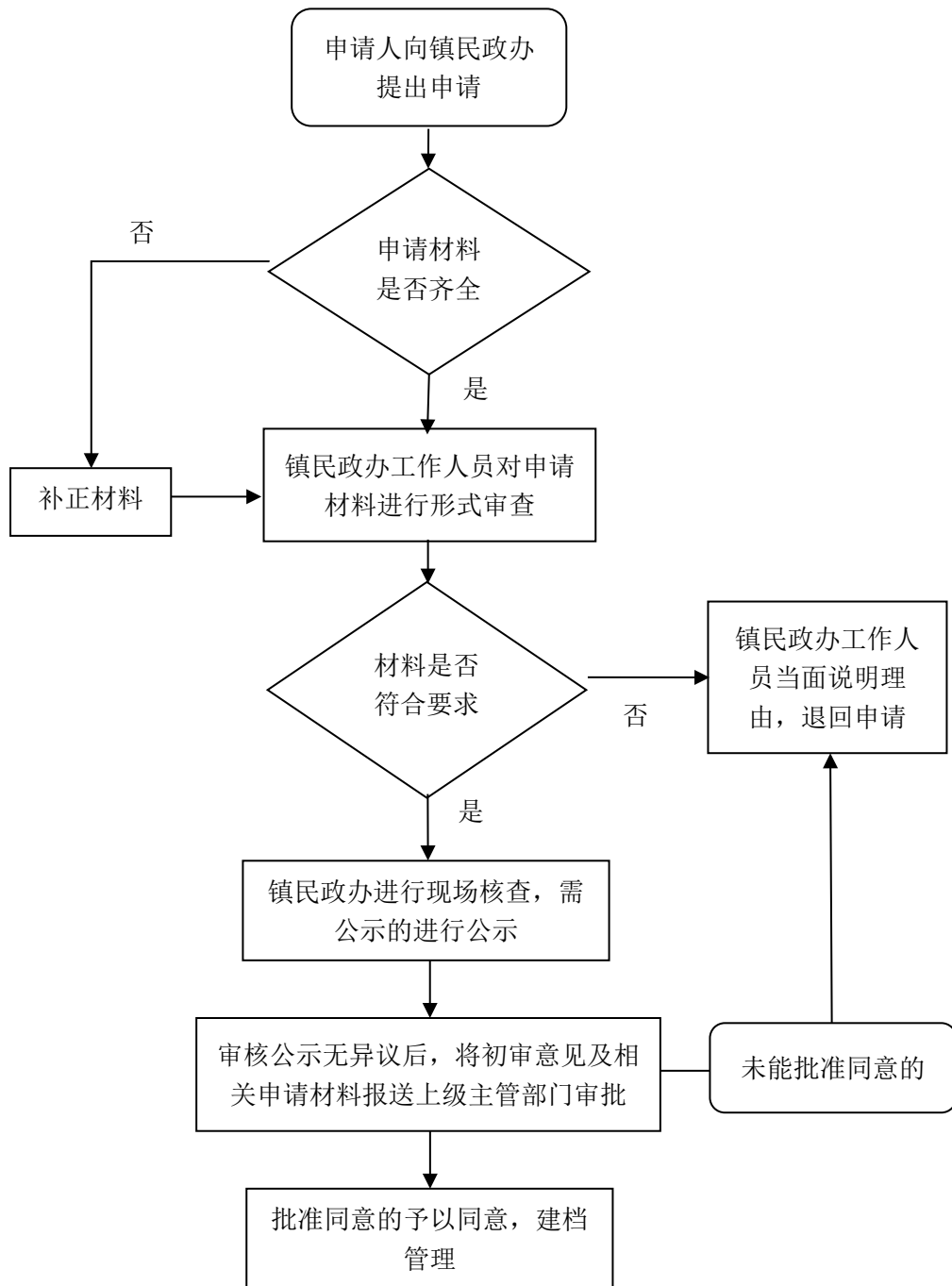
辖区内有关争议及矛盾纠纷的调解流程图



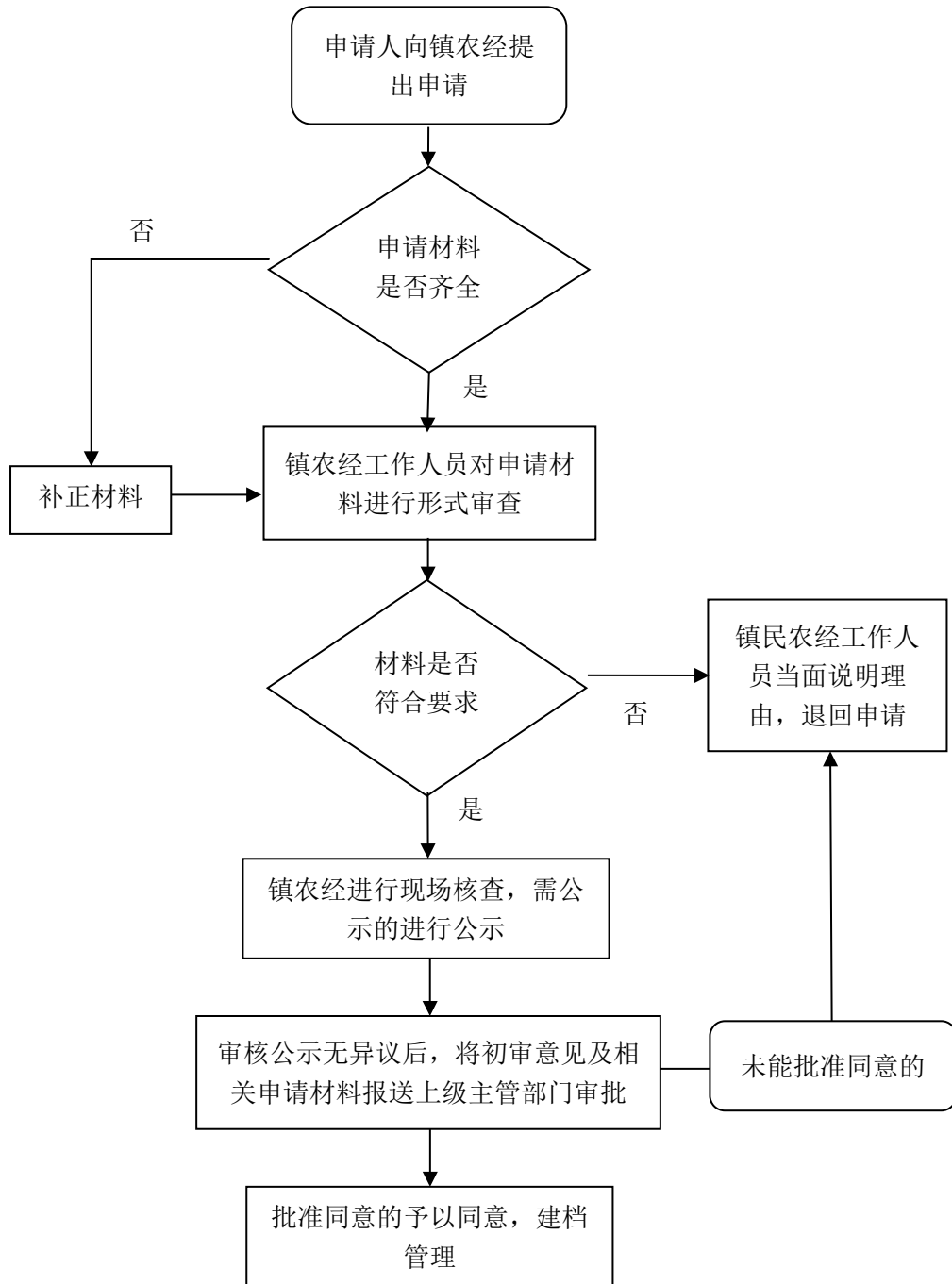
公共租赁住房申请初审流程图



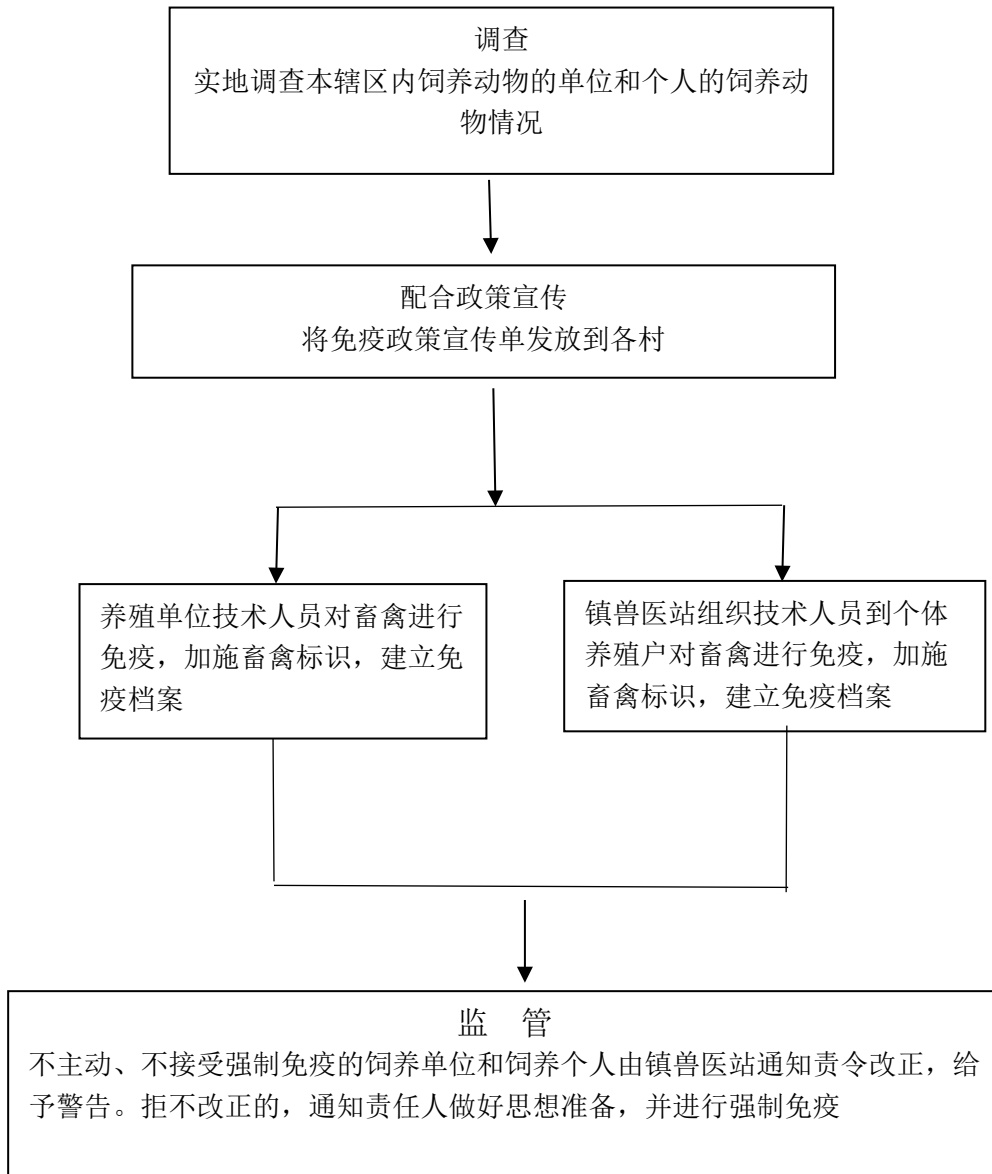
城镇住房保障家庭租赁补贴初审流程图



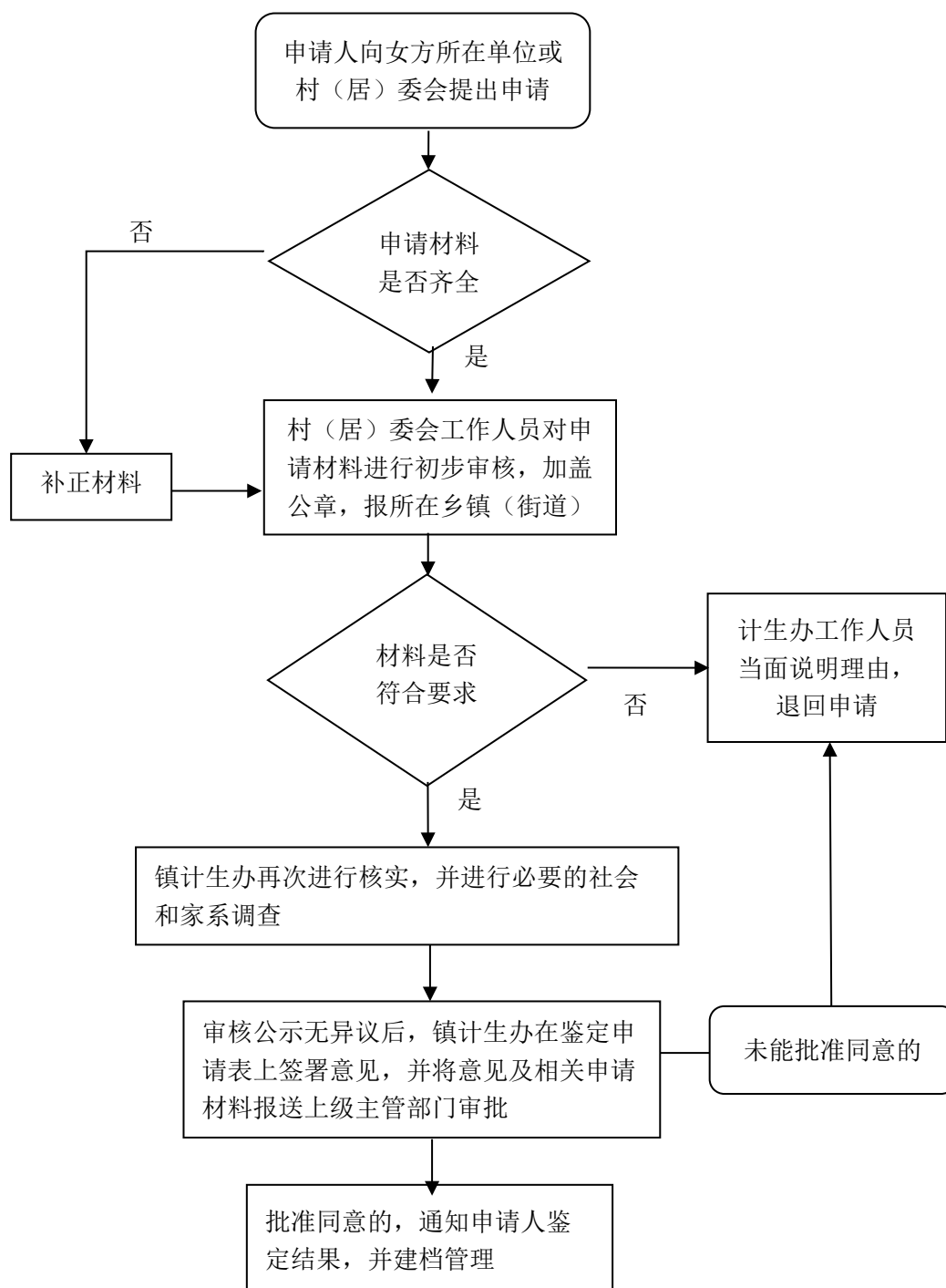
承包期内农村承包地调整的审核流程图



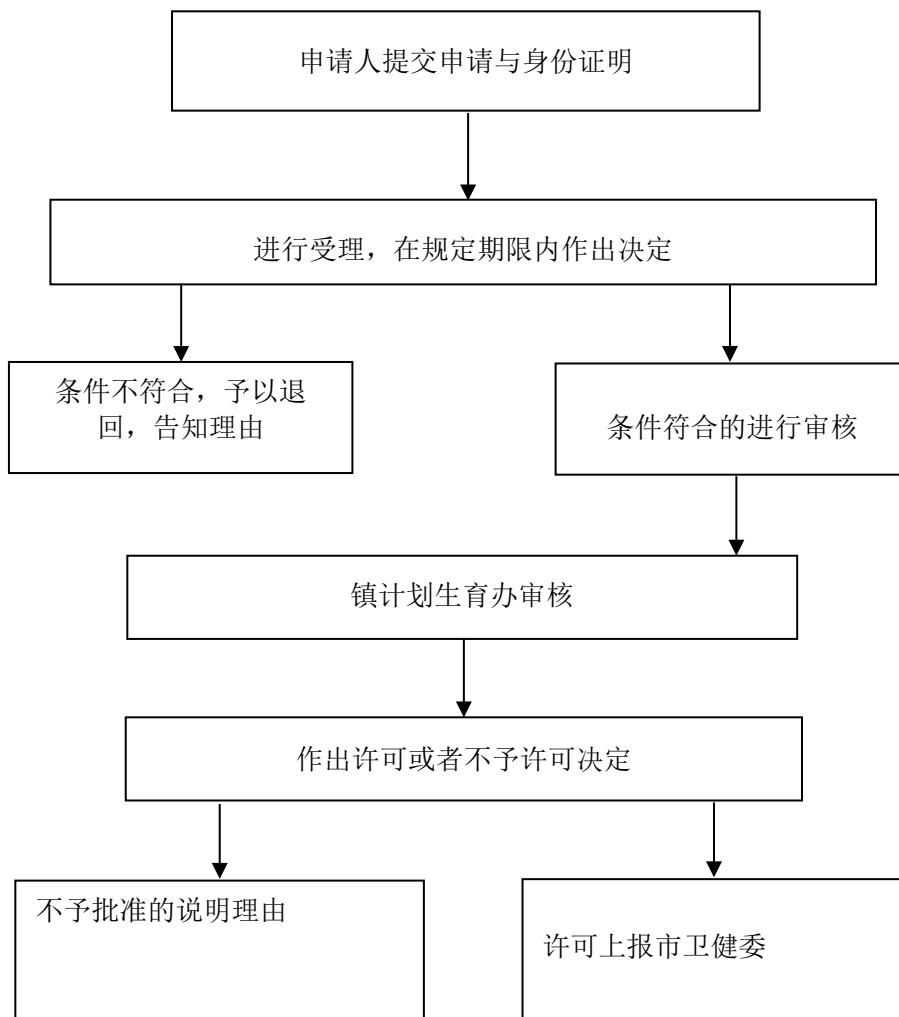
组织开展动物疫病强制免疫流程图



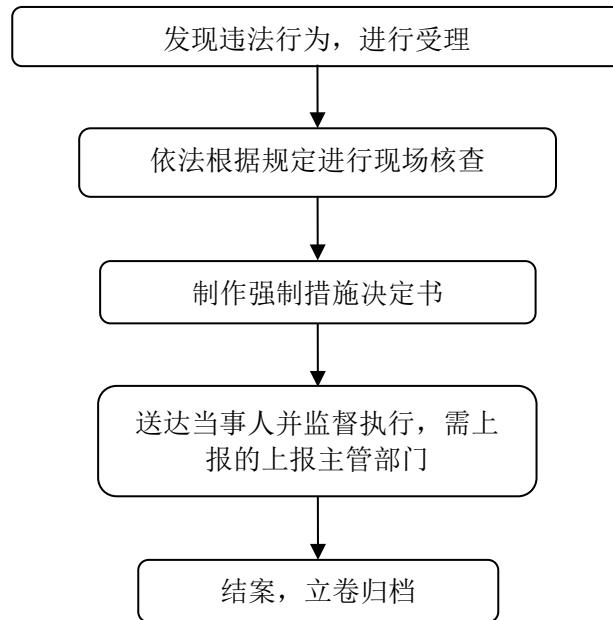
病残儿医学鉴定审核转报流程图



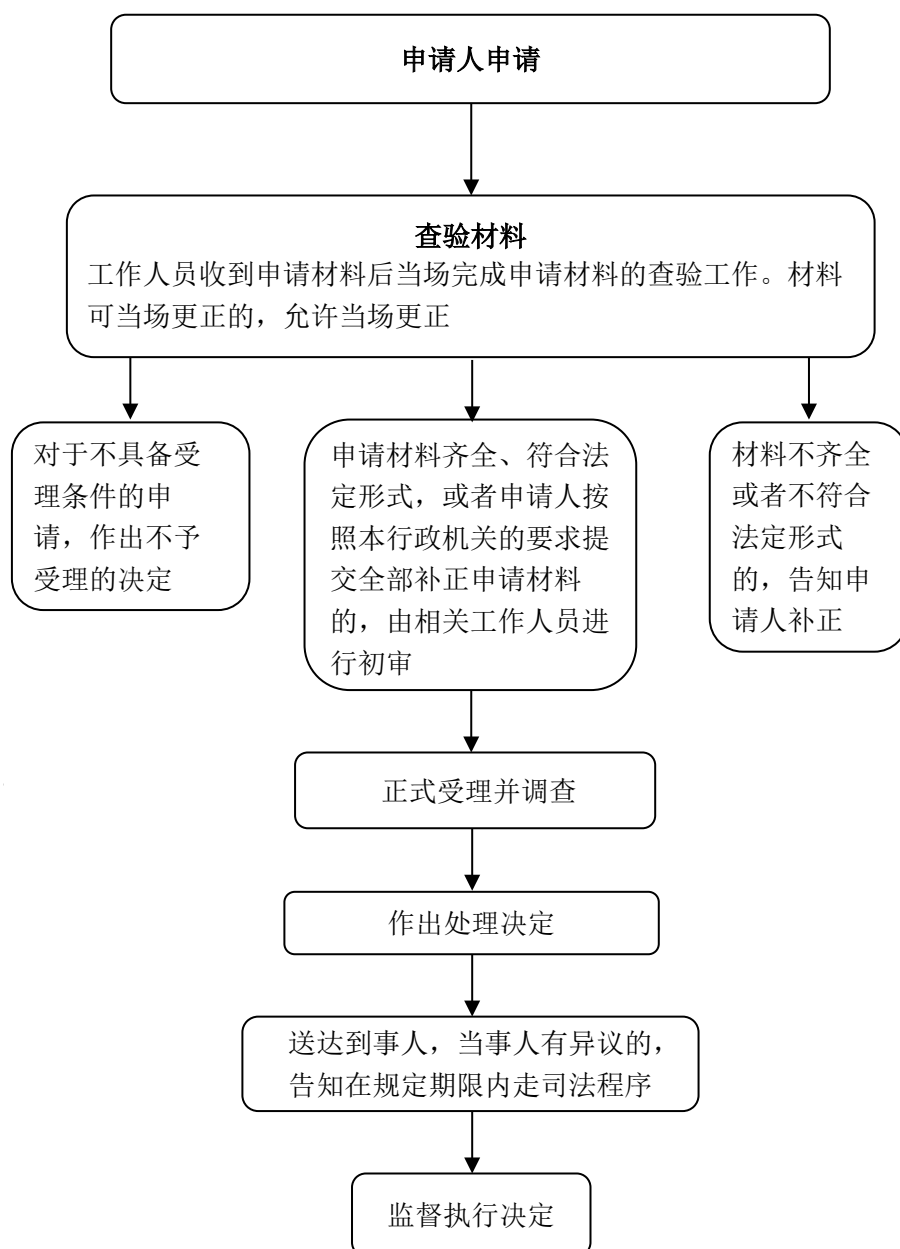
20 周岁以上、妊娠 14 周以上的孕妇非医学需要终止妊娠的审核



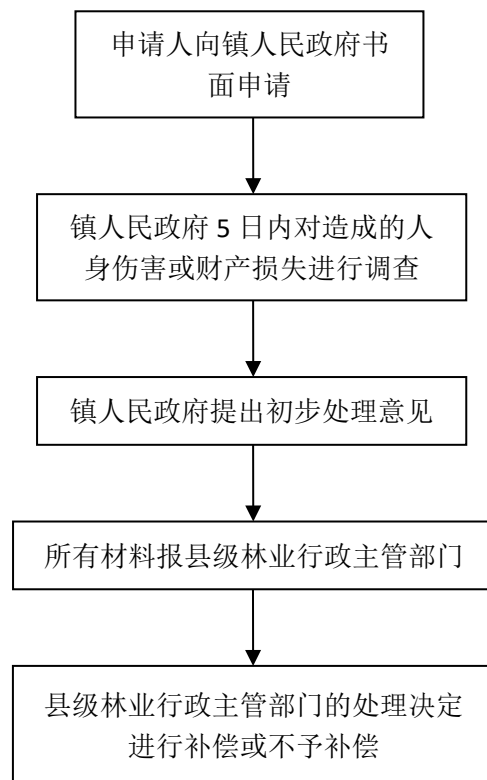
对生产经营单位安全生产监督检查



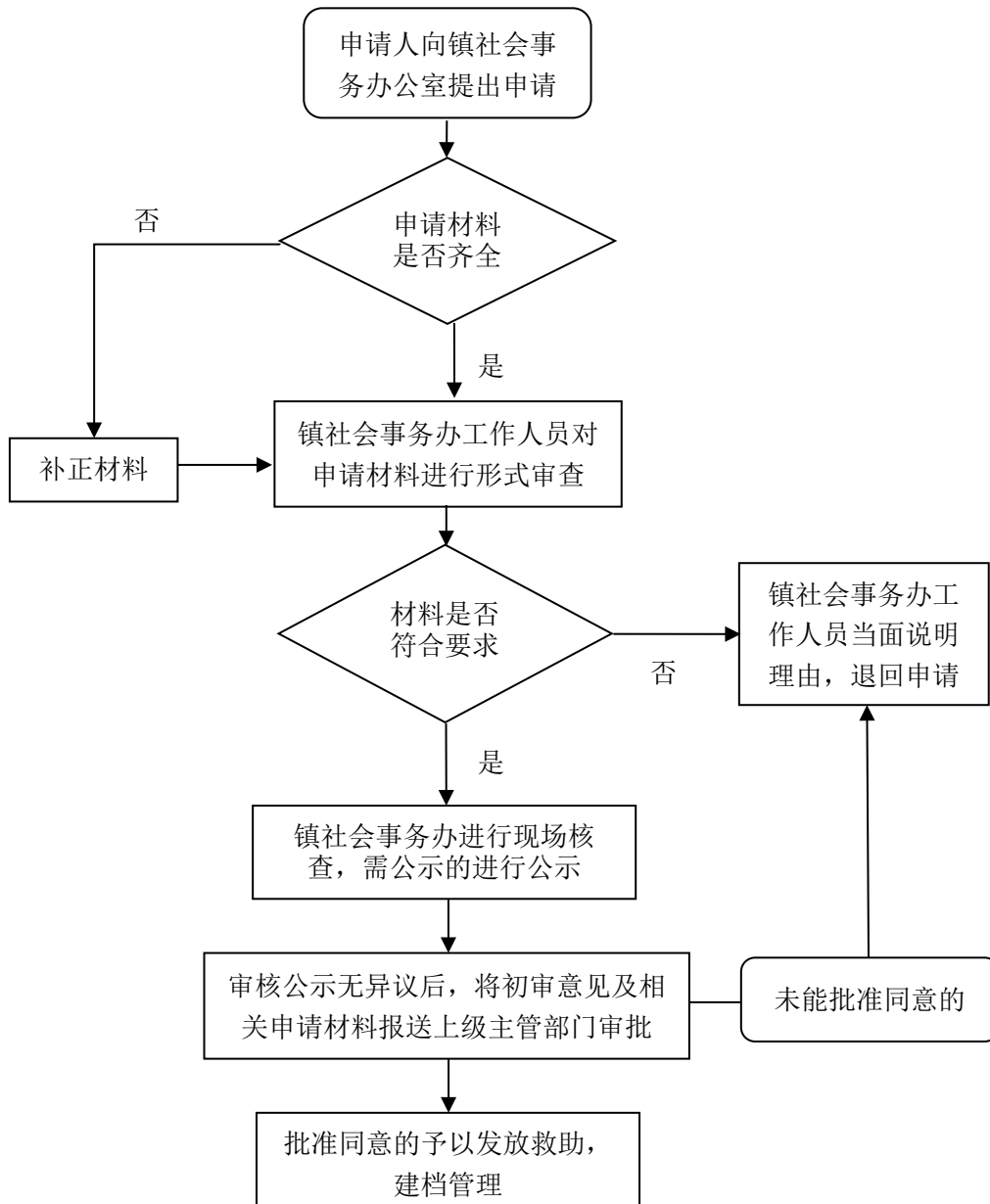
个人之间、个人与单位之间林木所有权、 林地使用权争议处理



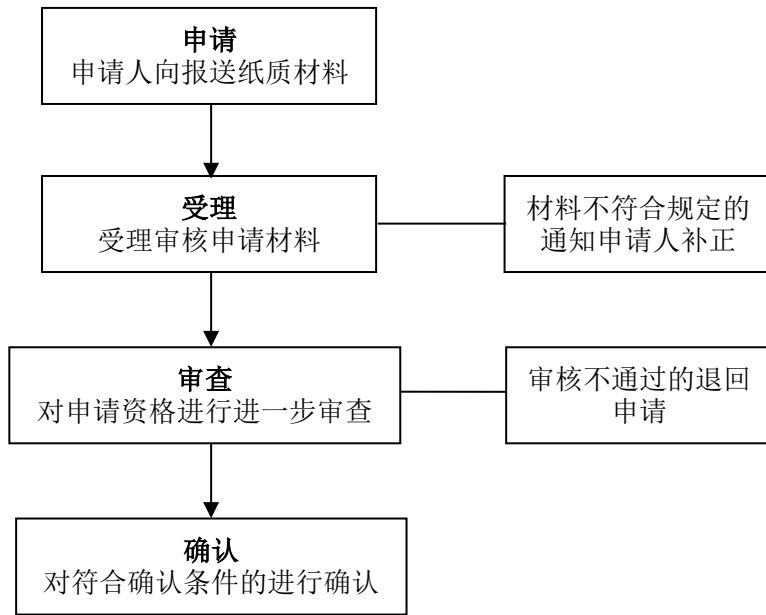
对陆生野生动物造成人身伤害和财产损失 补偿申请的初审转报



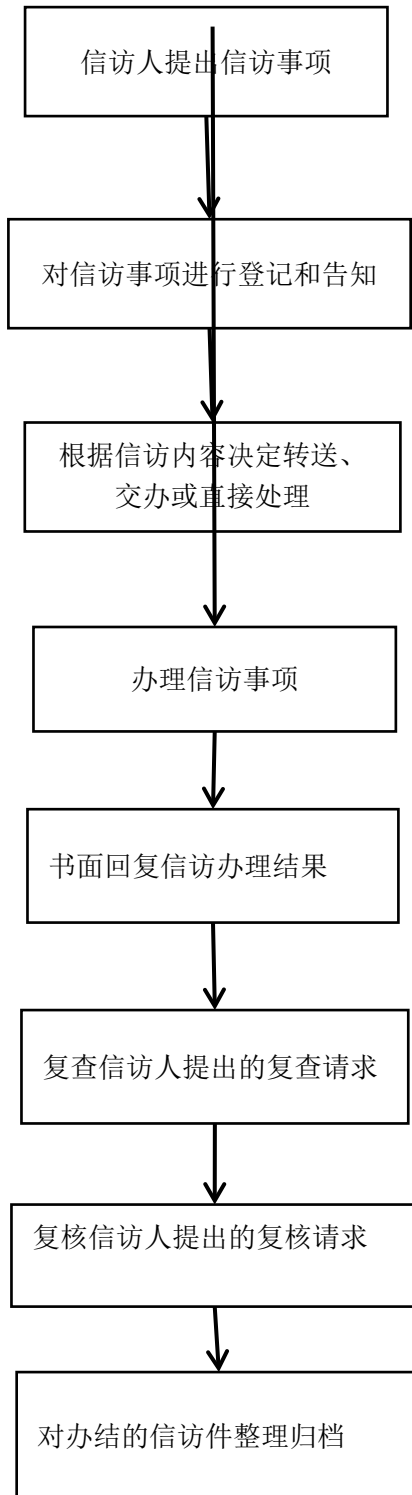
医疗救助的初审



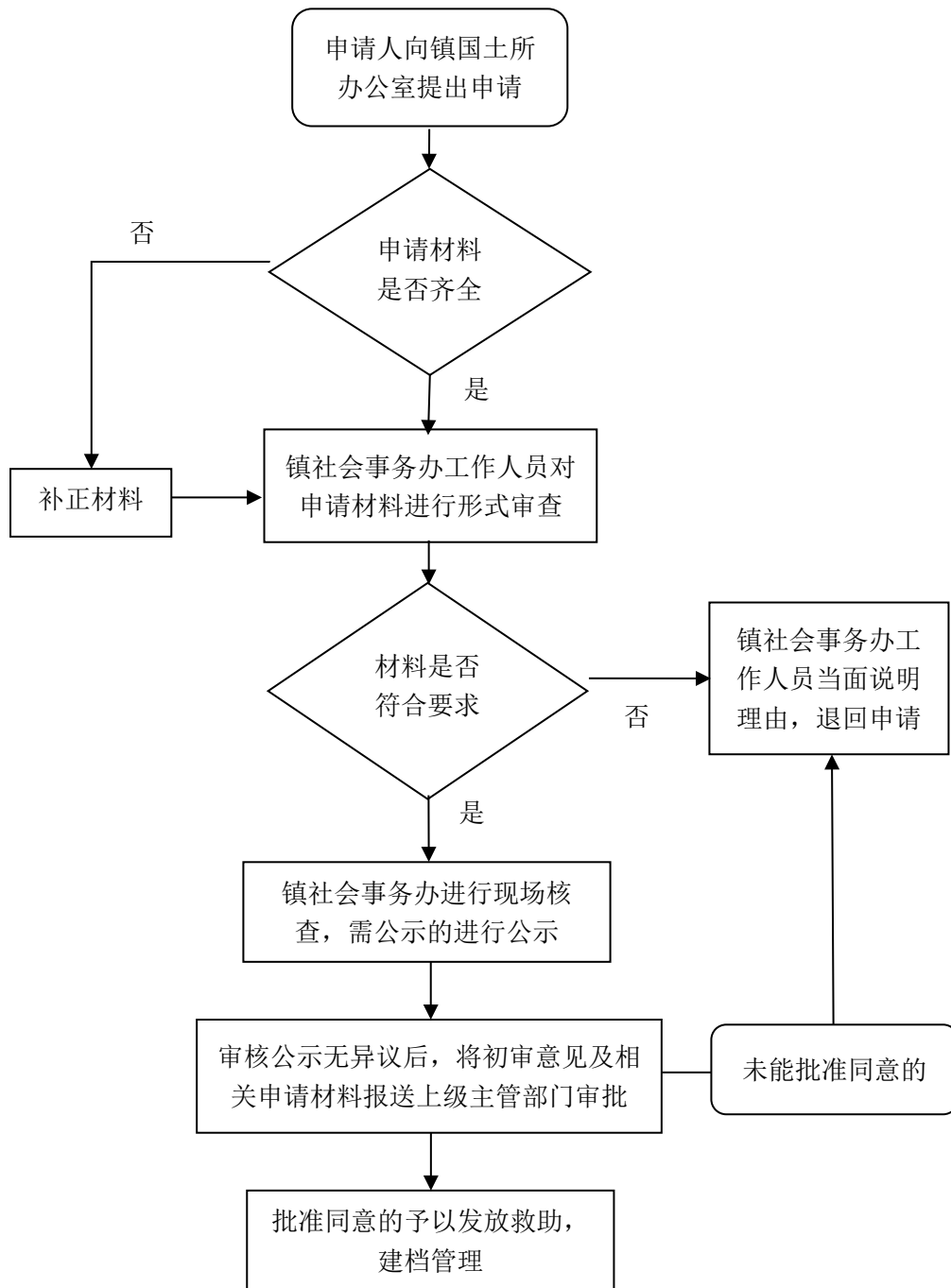
兵役登记



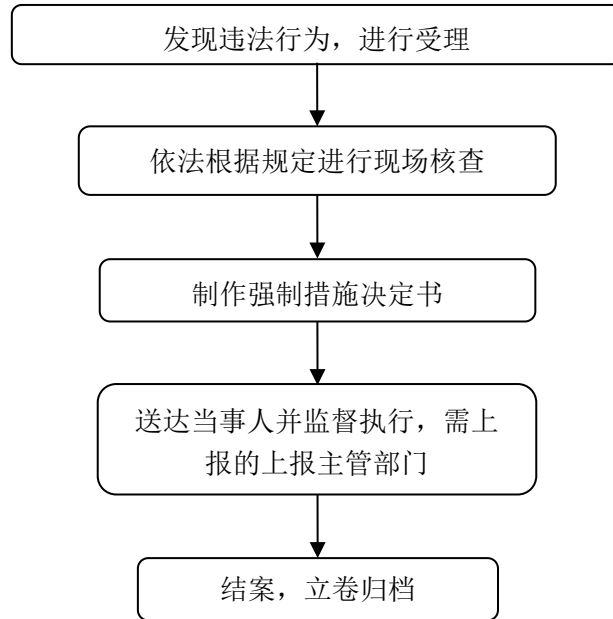
信访事项办理



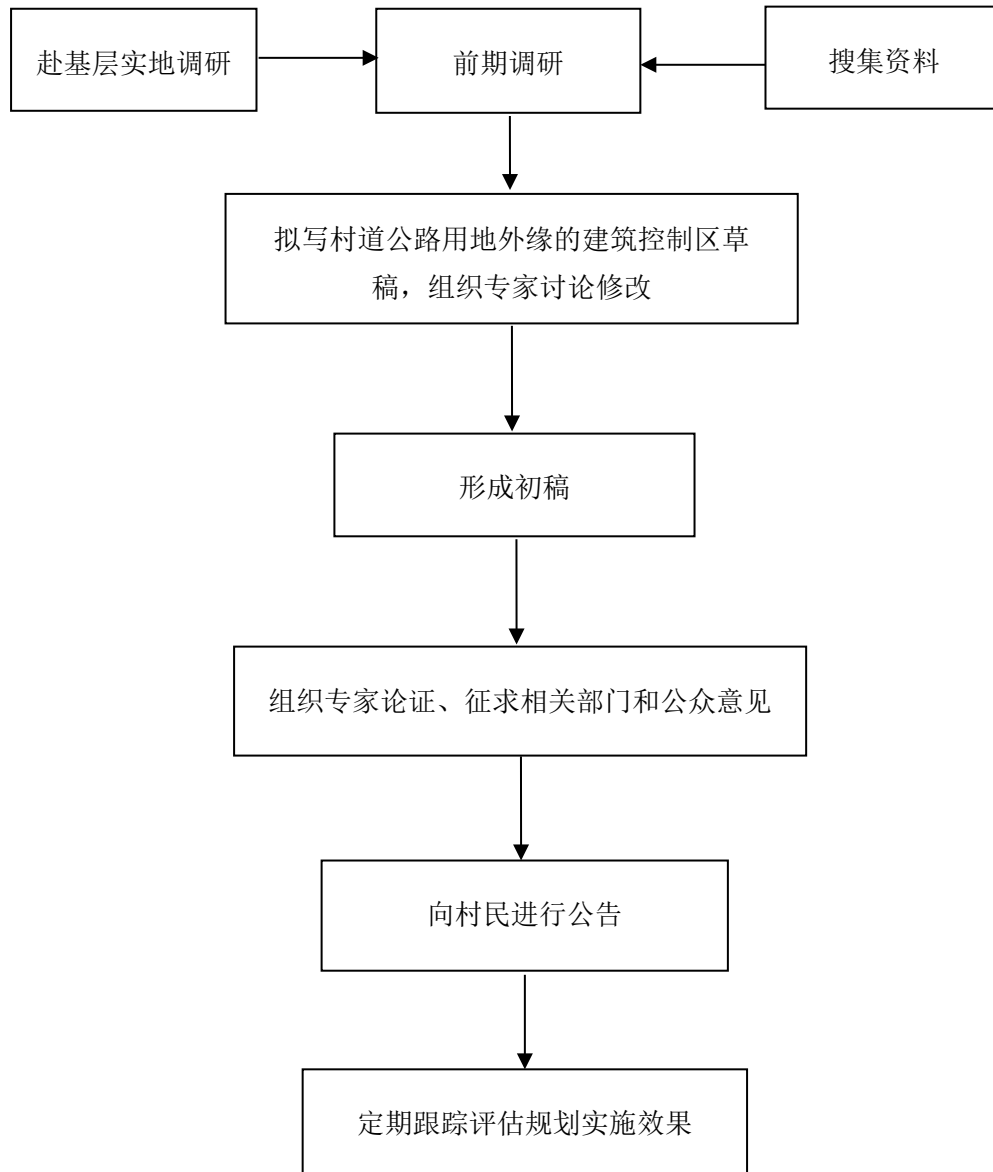
土地权属争议处理



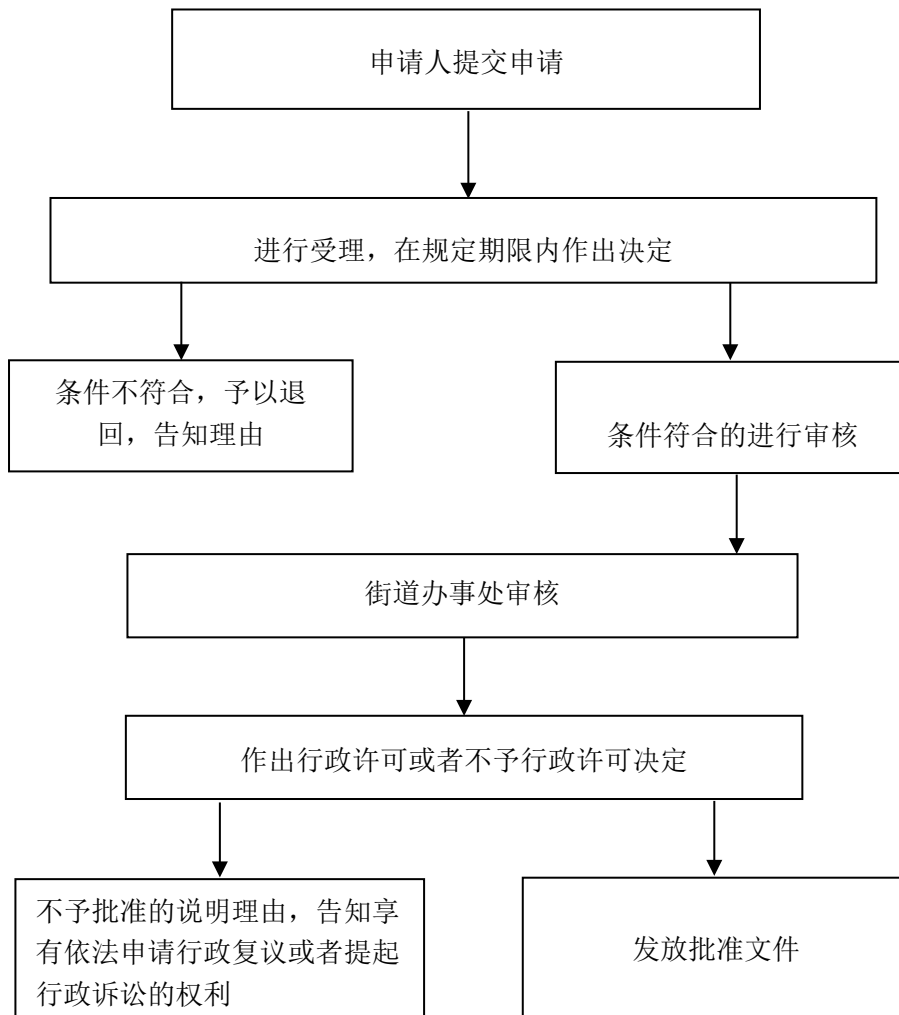
防汛遇到阻拦和拖延时组织强制实施



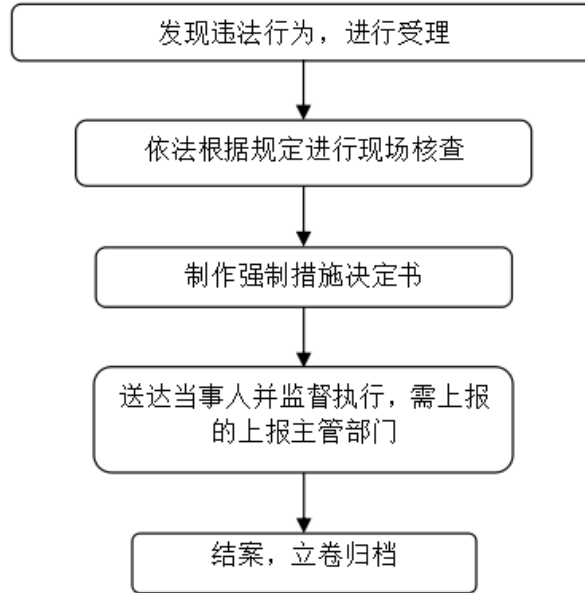
确定村道公路用地外缘的建筑控制区



编制乡镇国土空间规划及村庄规划



对非法种植毒品原植物的铲除



最低生活保障审批
特困人员供养审批
临时救助审核转报
孤儿基本生活费审核转报

