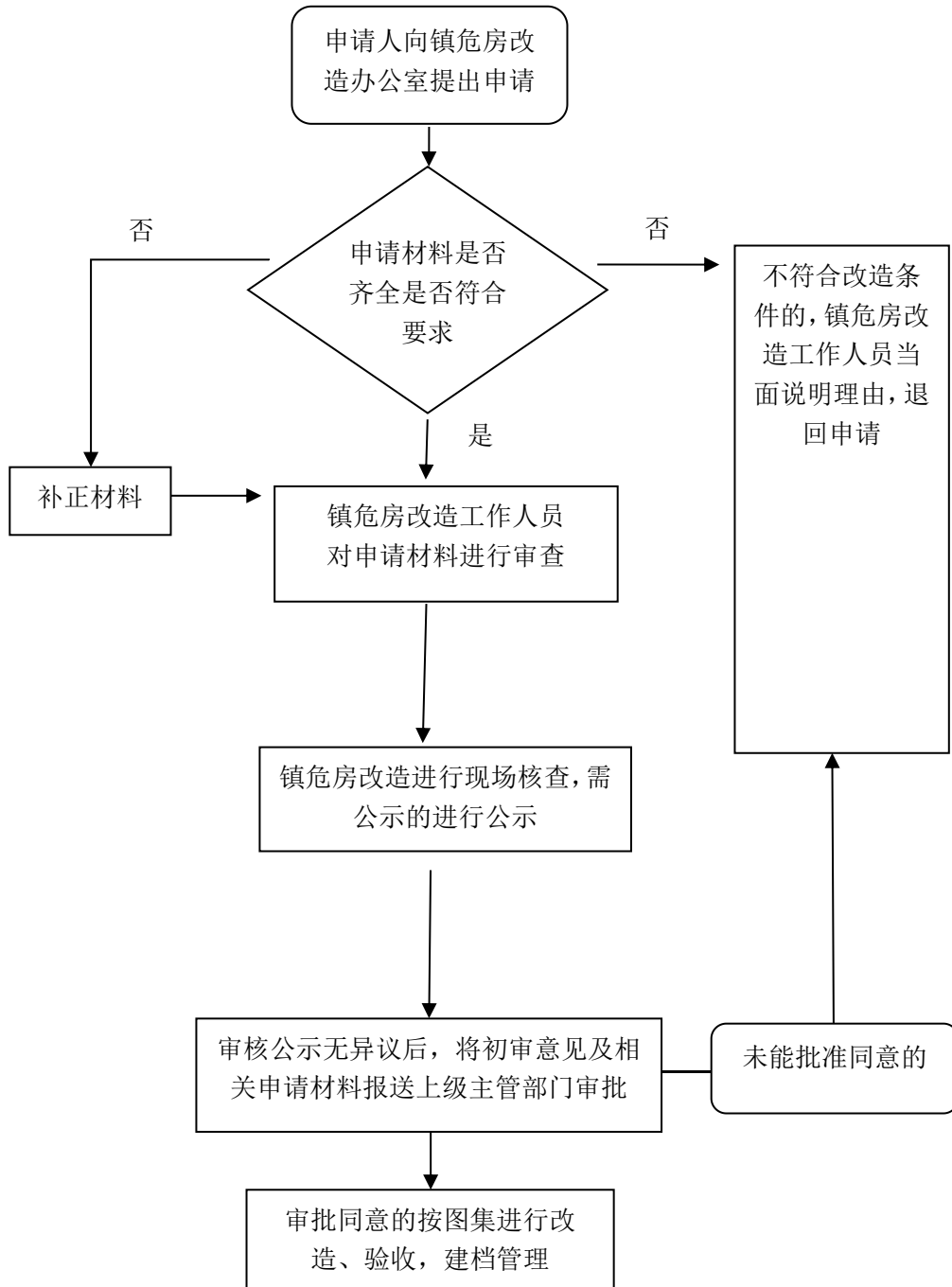
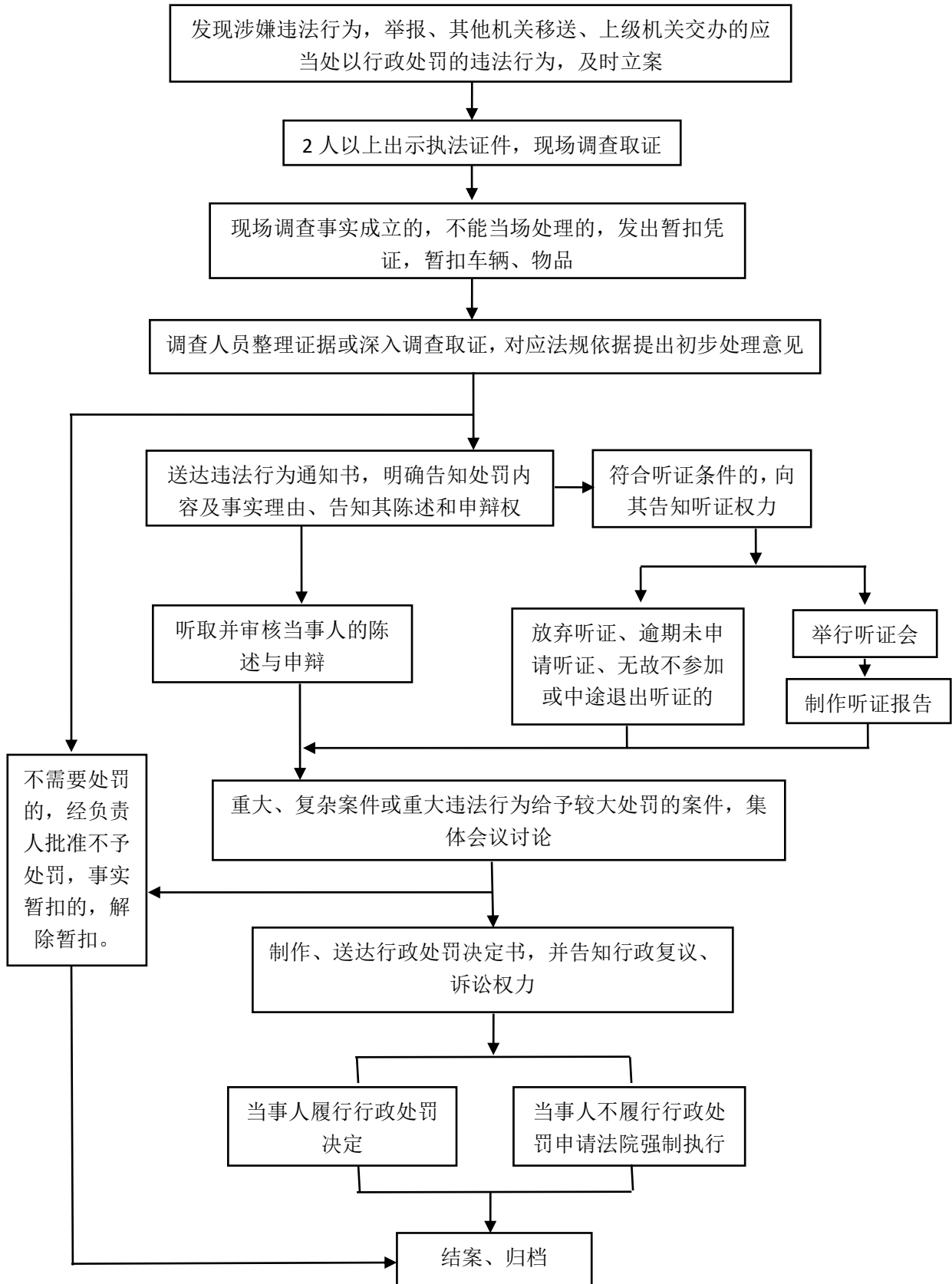


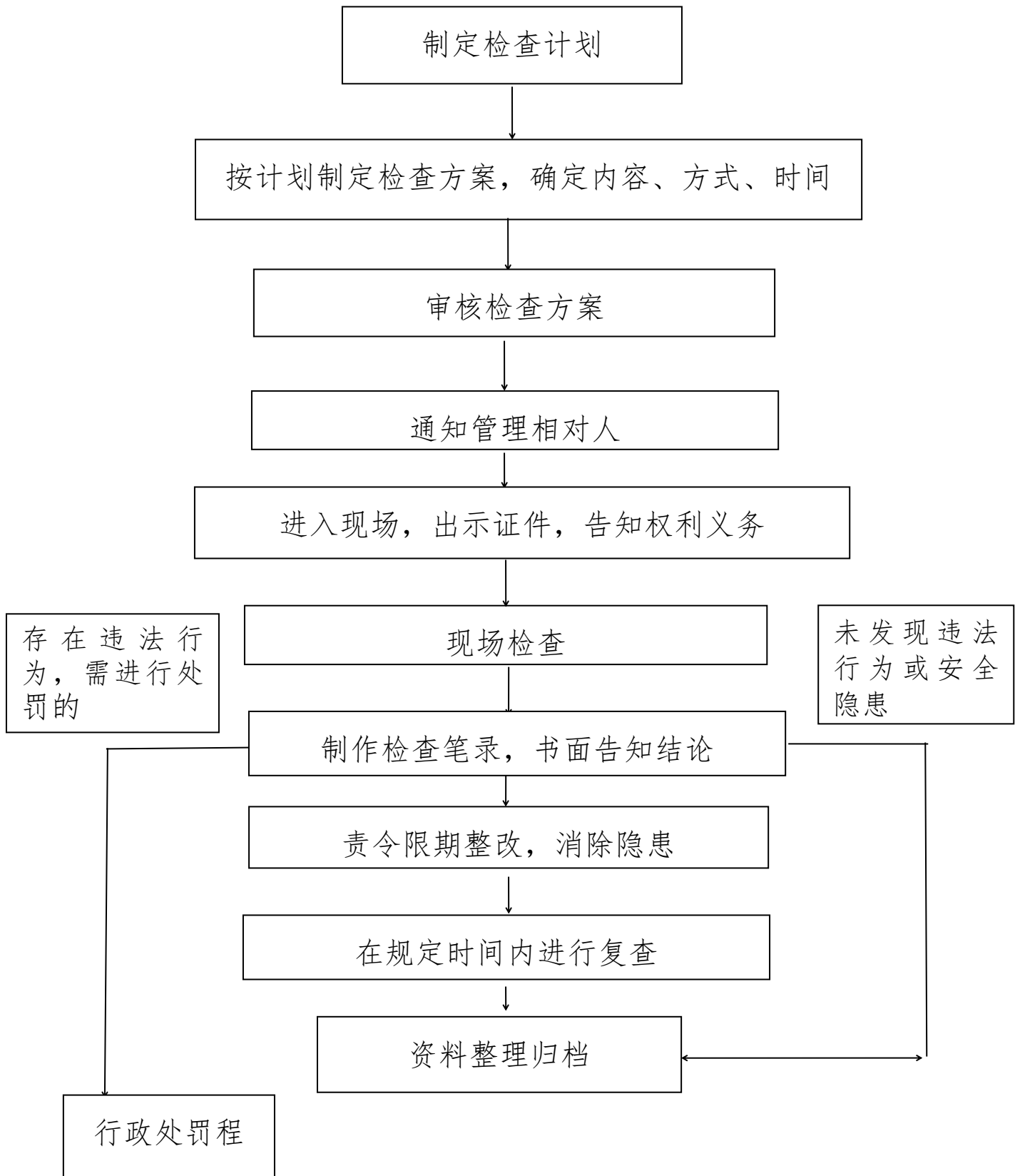
# 农村危房改造审核转报流程图



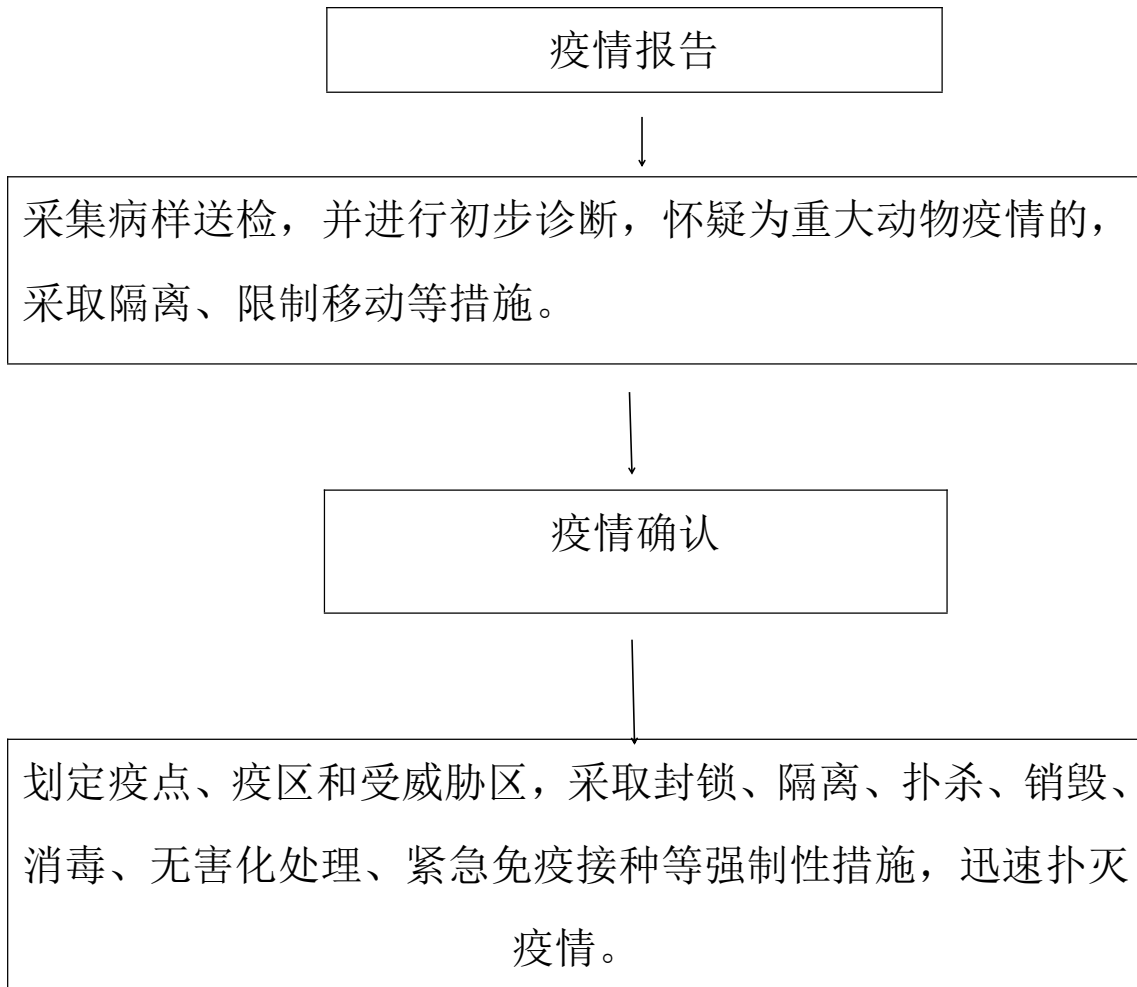
# 超限超载车辆货运源头治理流程图



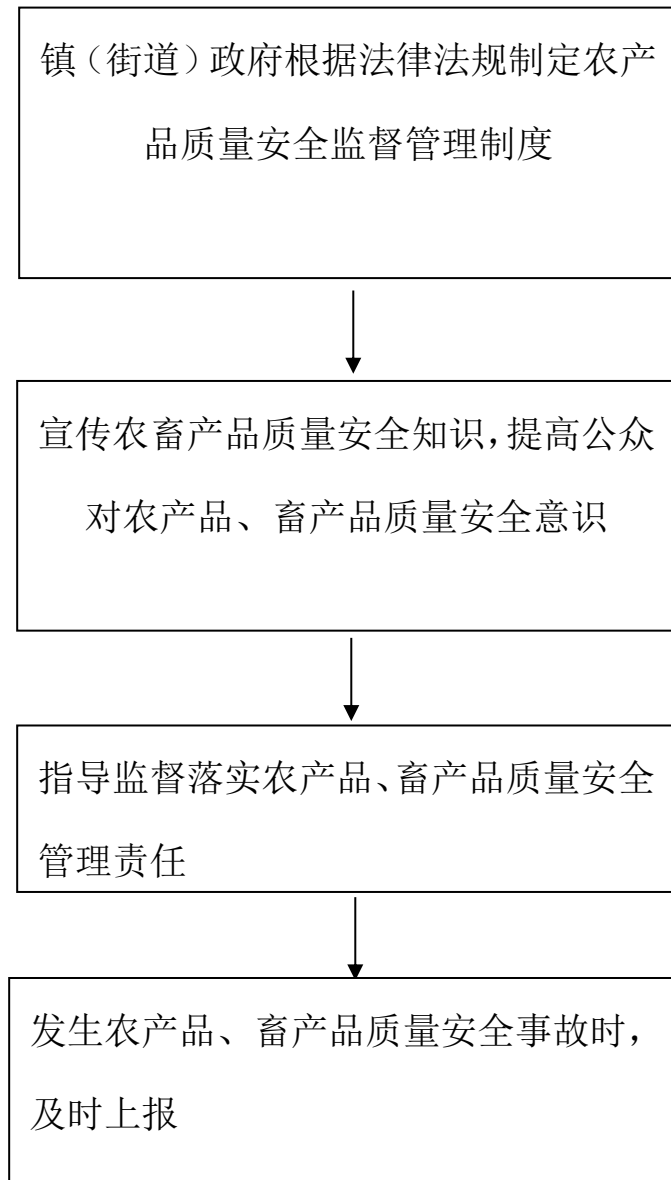
# 内河交通安全管理和监督检查流程图



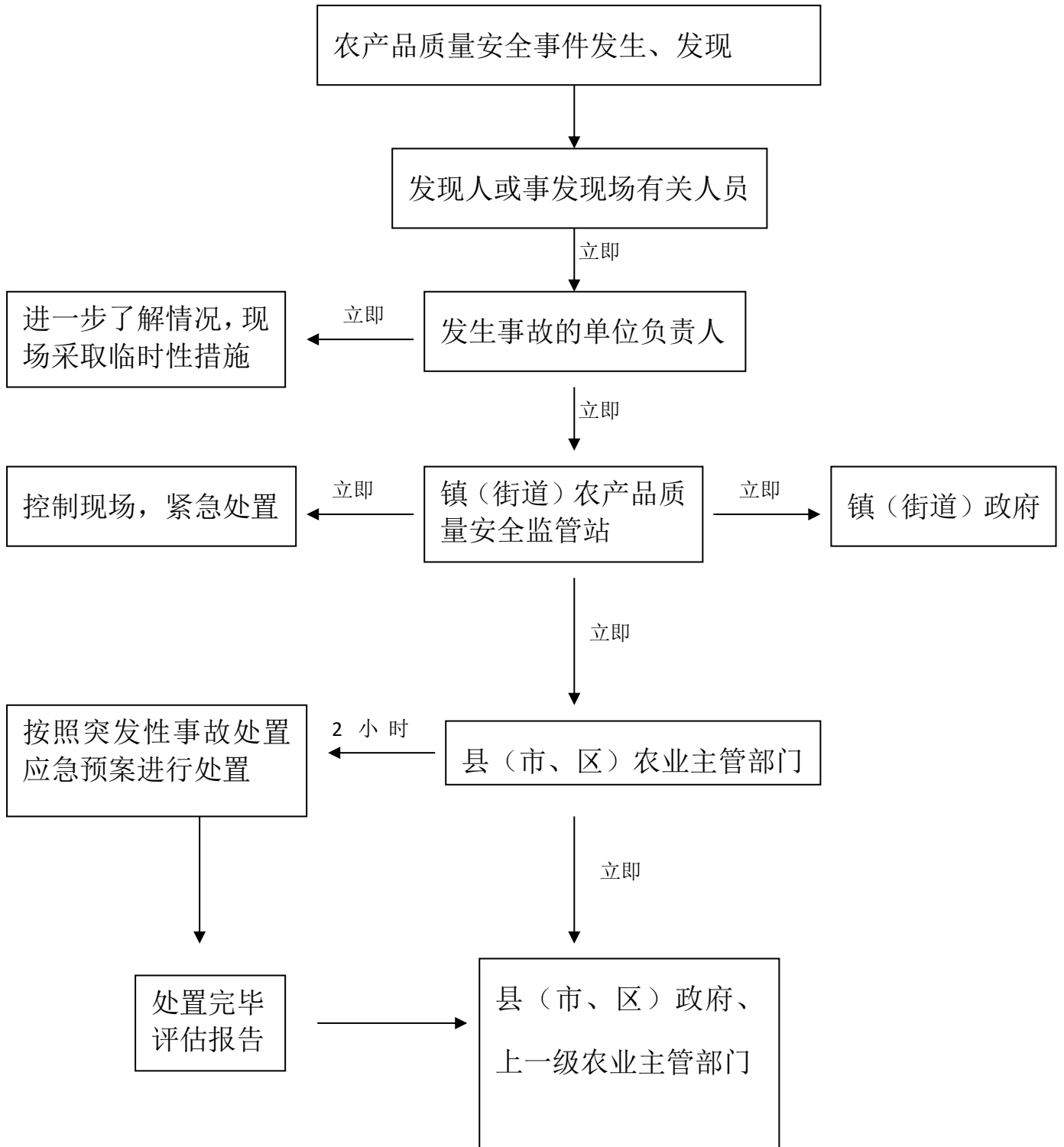
# 动物疫病预防与控制及重大动物疫情的应急处理流程图



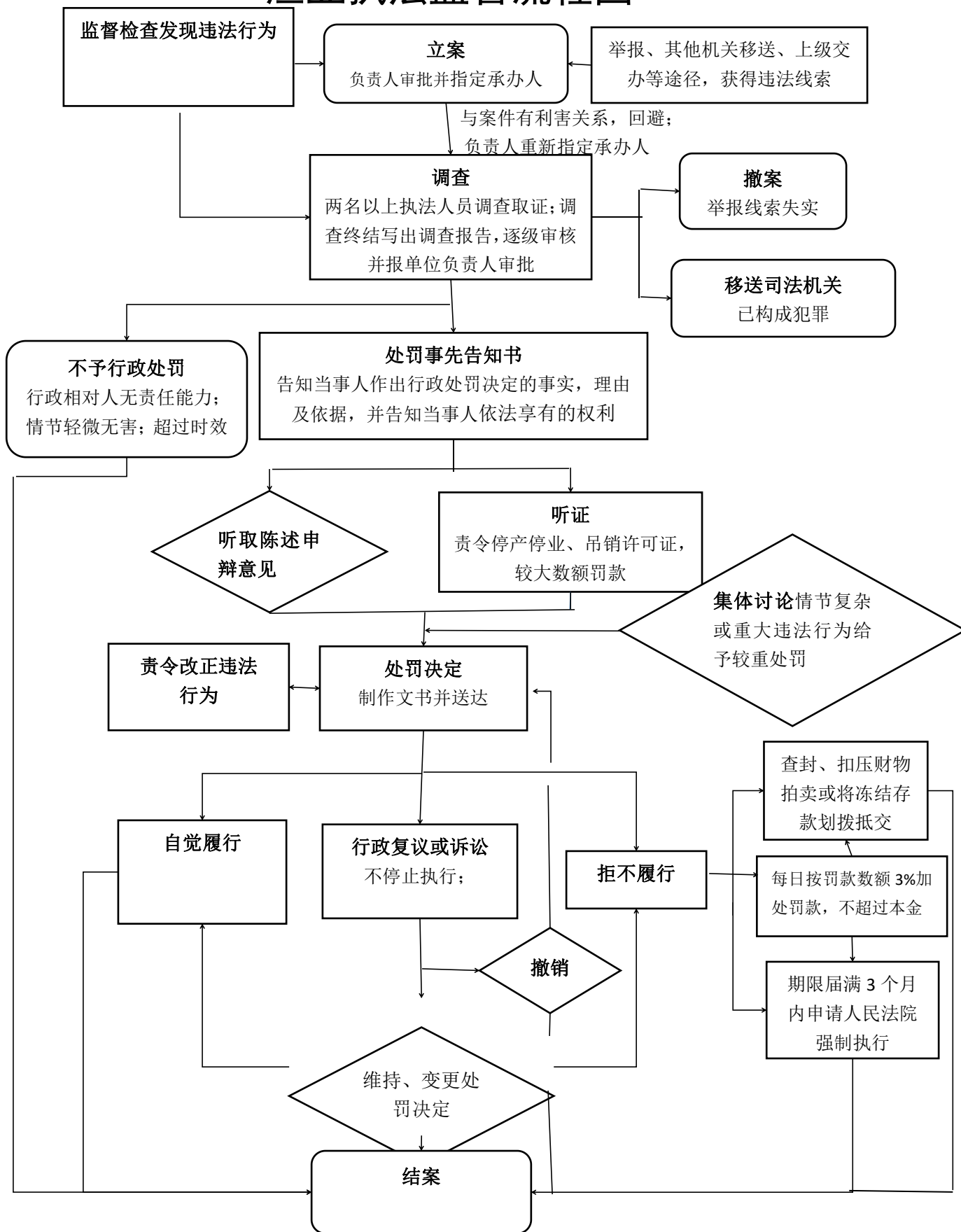
# 农畜产品质量安全监督管理流程图



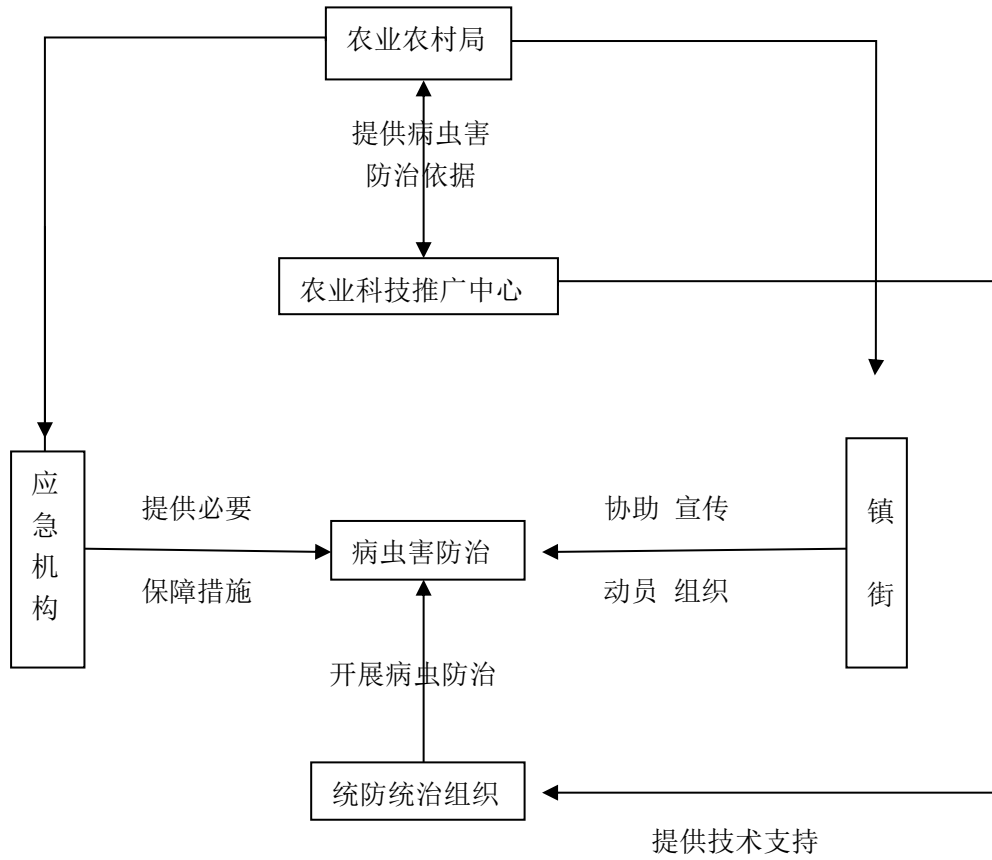
# 农产品质量安全事故处理流程图



# 渔业执法监管流程图

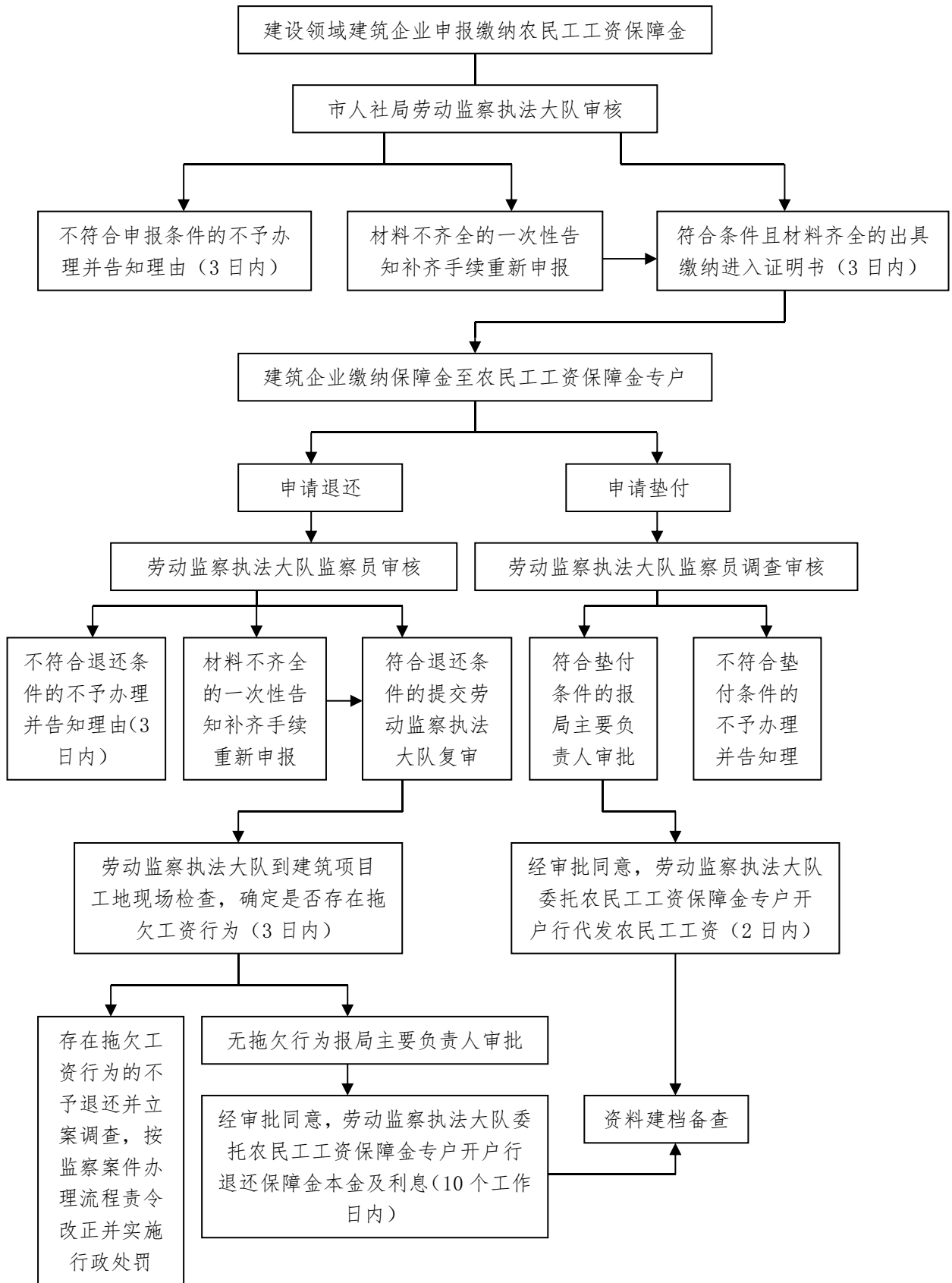


# 农作物病虫害防治流程图

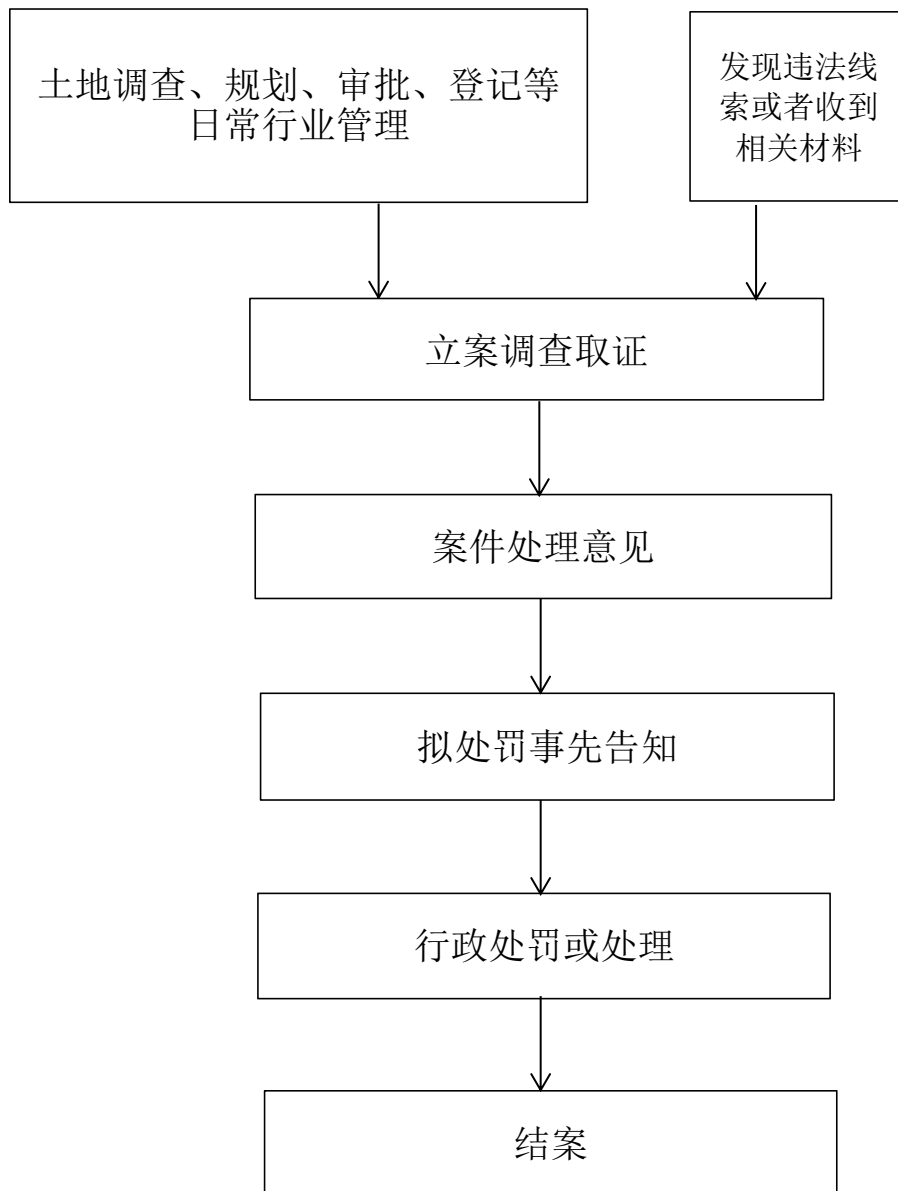




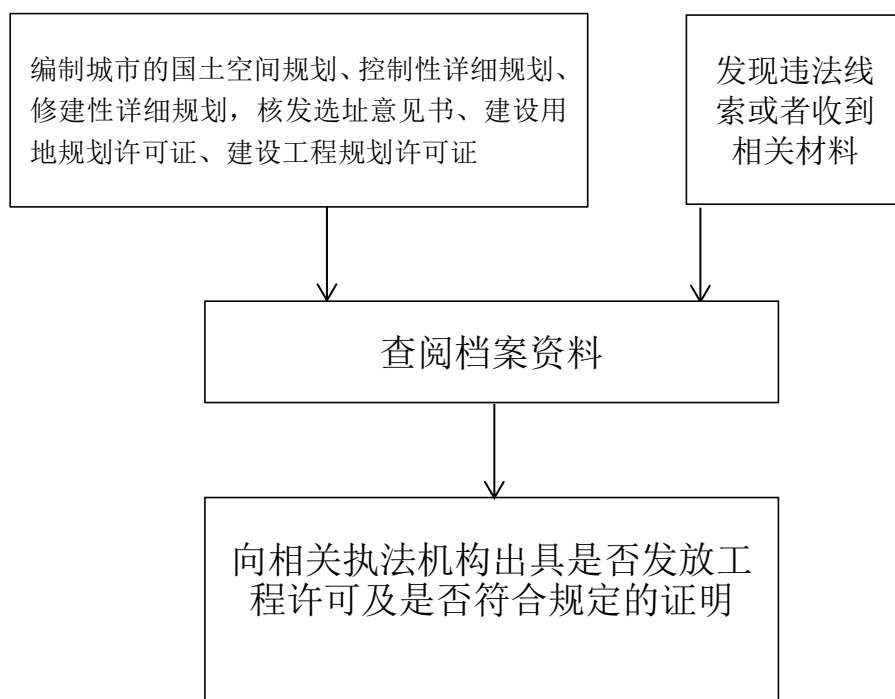
# 保障农民工工资支付管理流程图



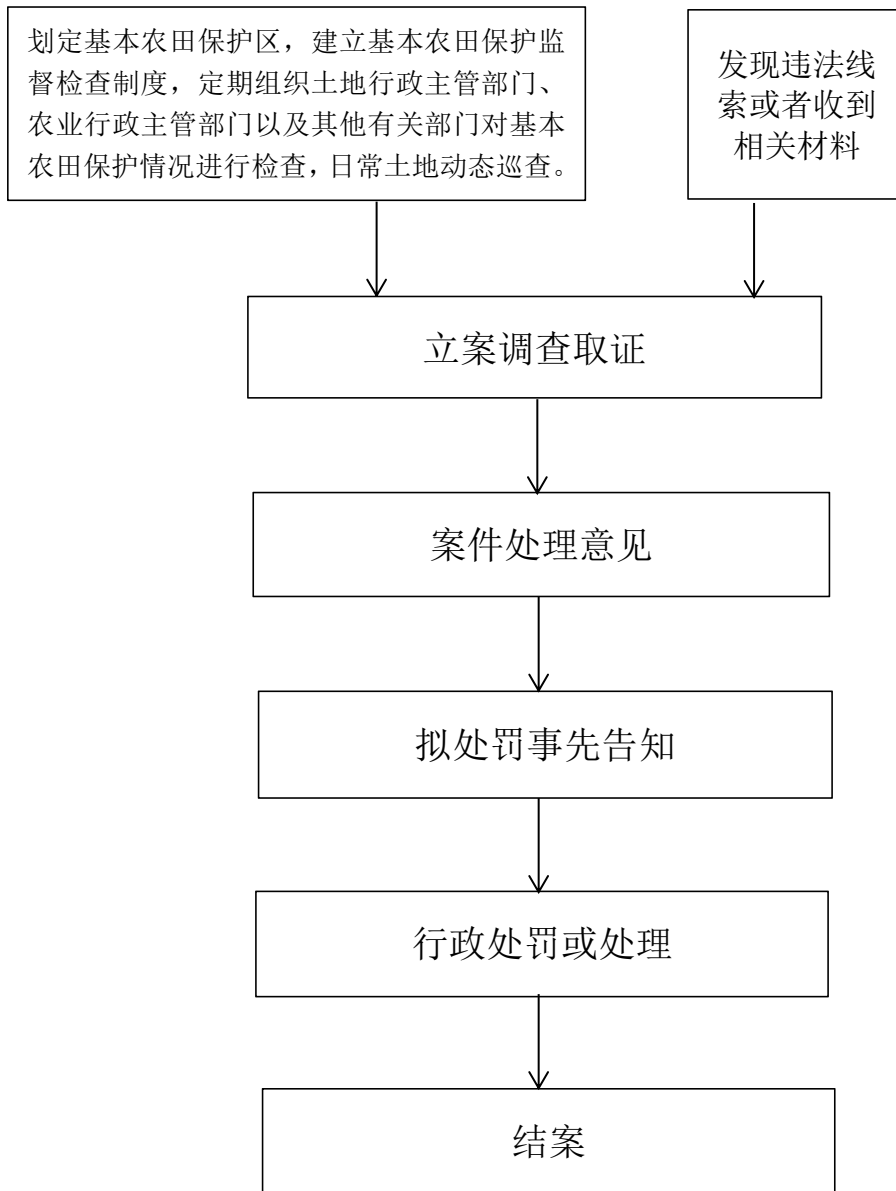
# 对违反土地管理法律法规行为的监管执法流程图



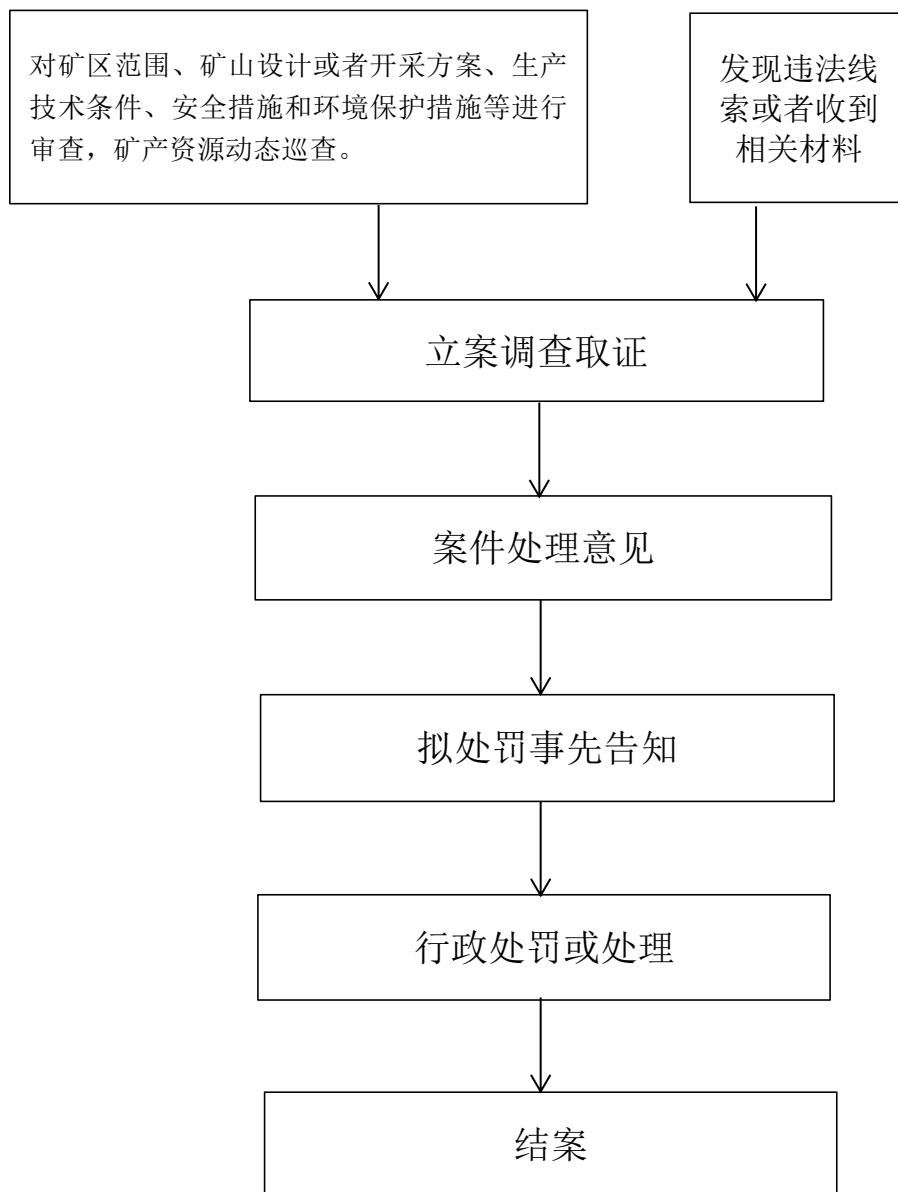
# 对违反城乡规划法律法规行为的监管执法流程图



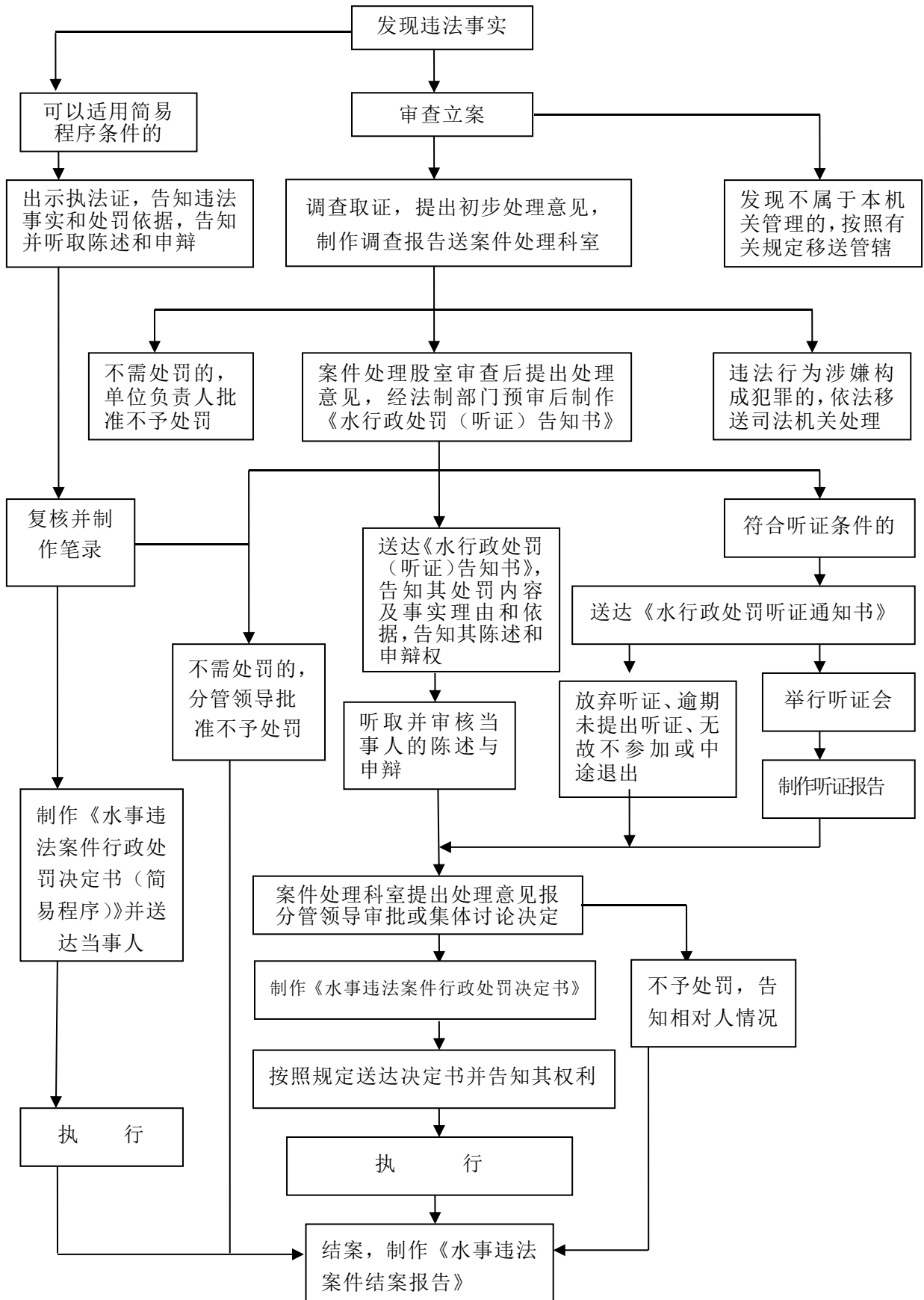
# 对基本农田保护监管执法流程图



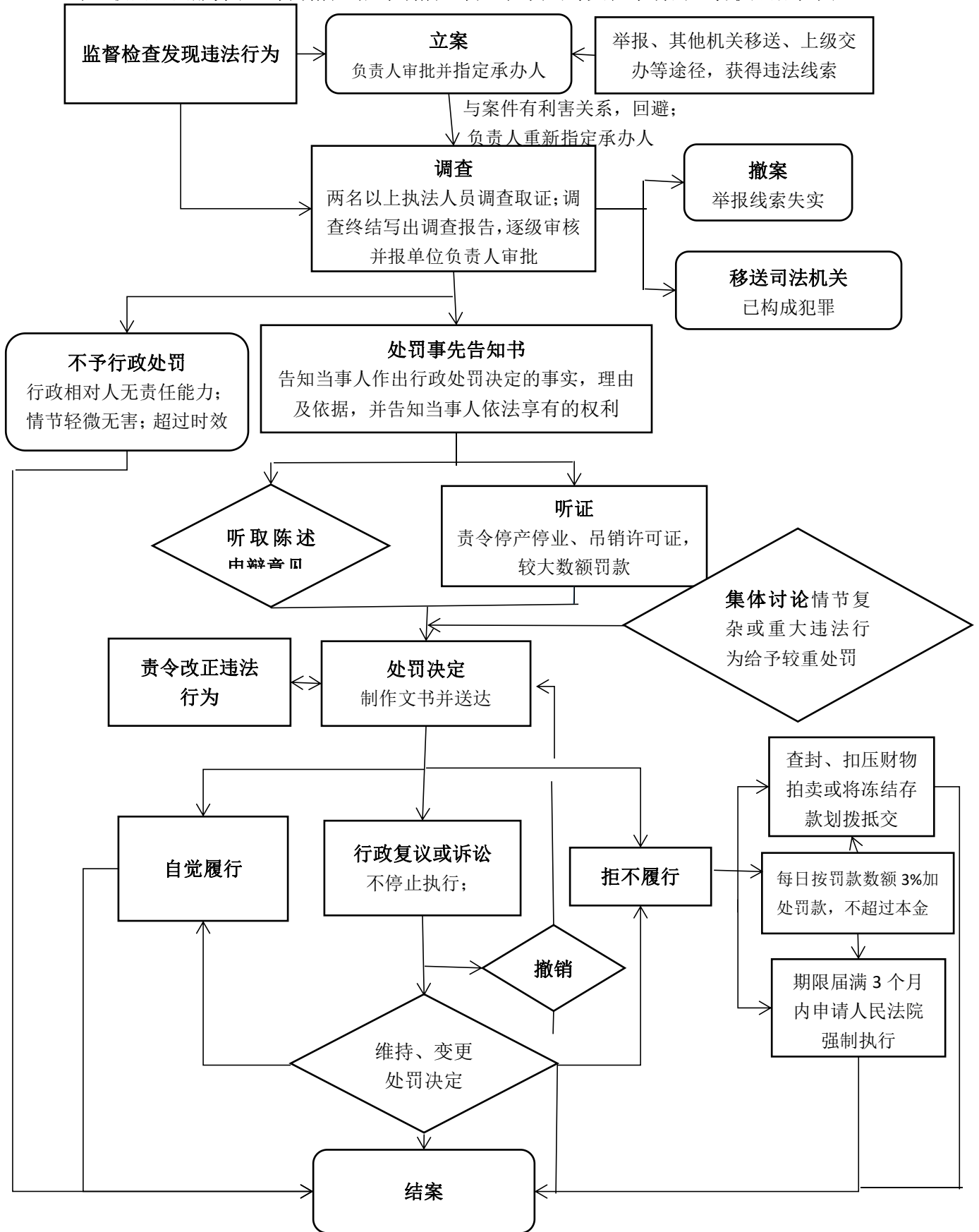
# 对非法采矿行为的监管执法流程图



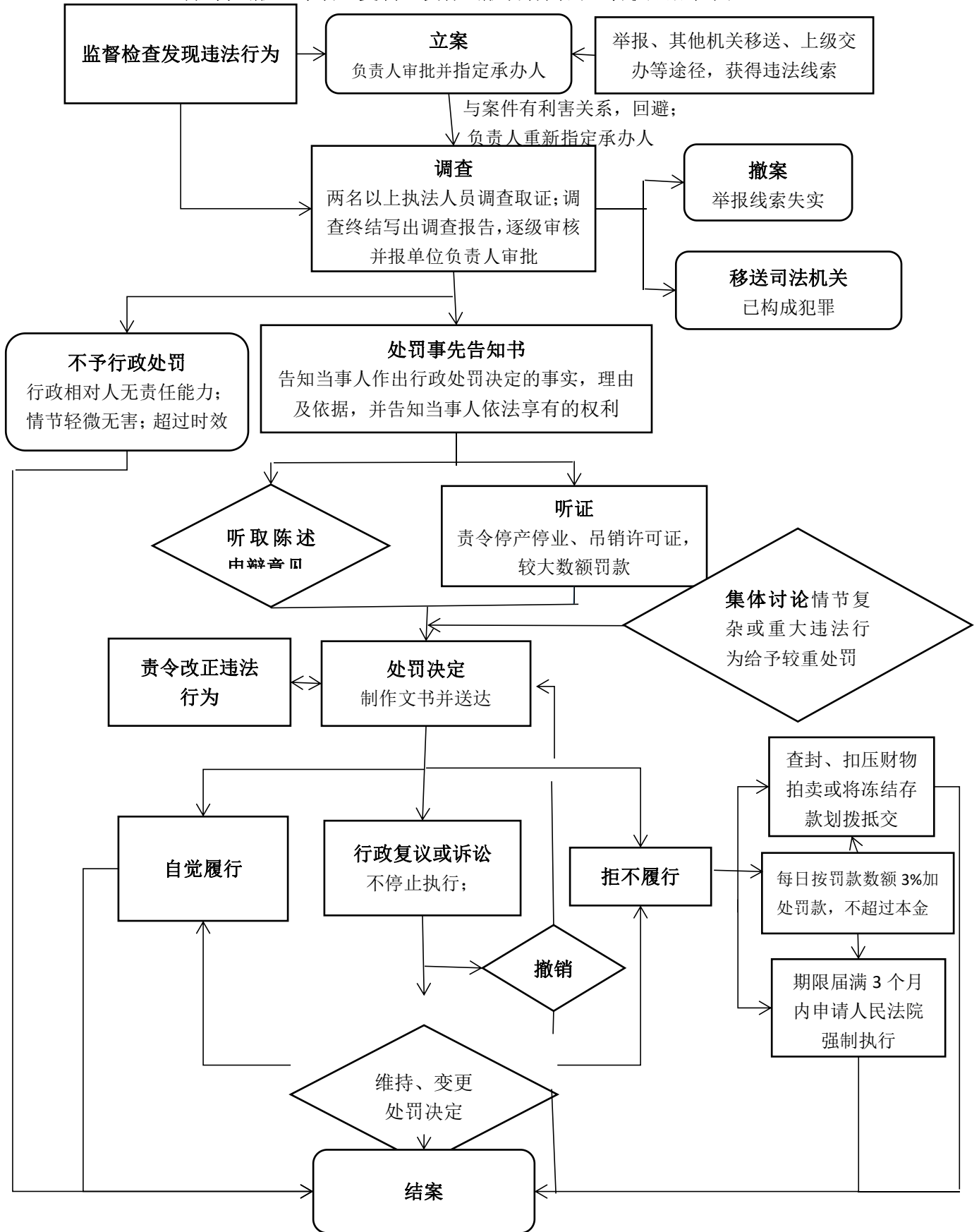
# 河道管理和综合整治运行流程图



对互联网上网服务和经营场所、娱乐场所、营业性演出等文化市场的监管执法流程图

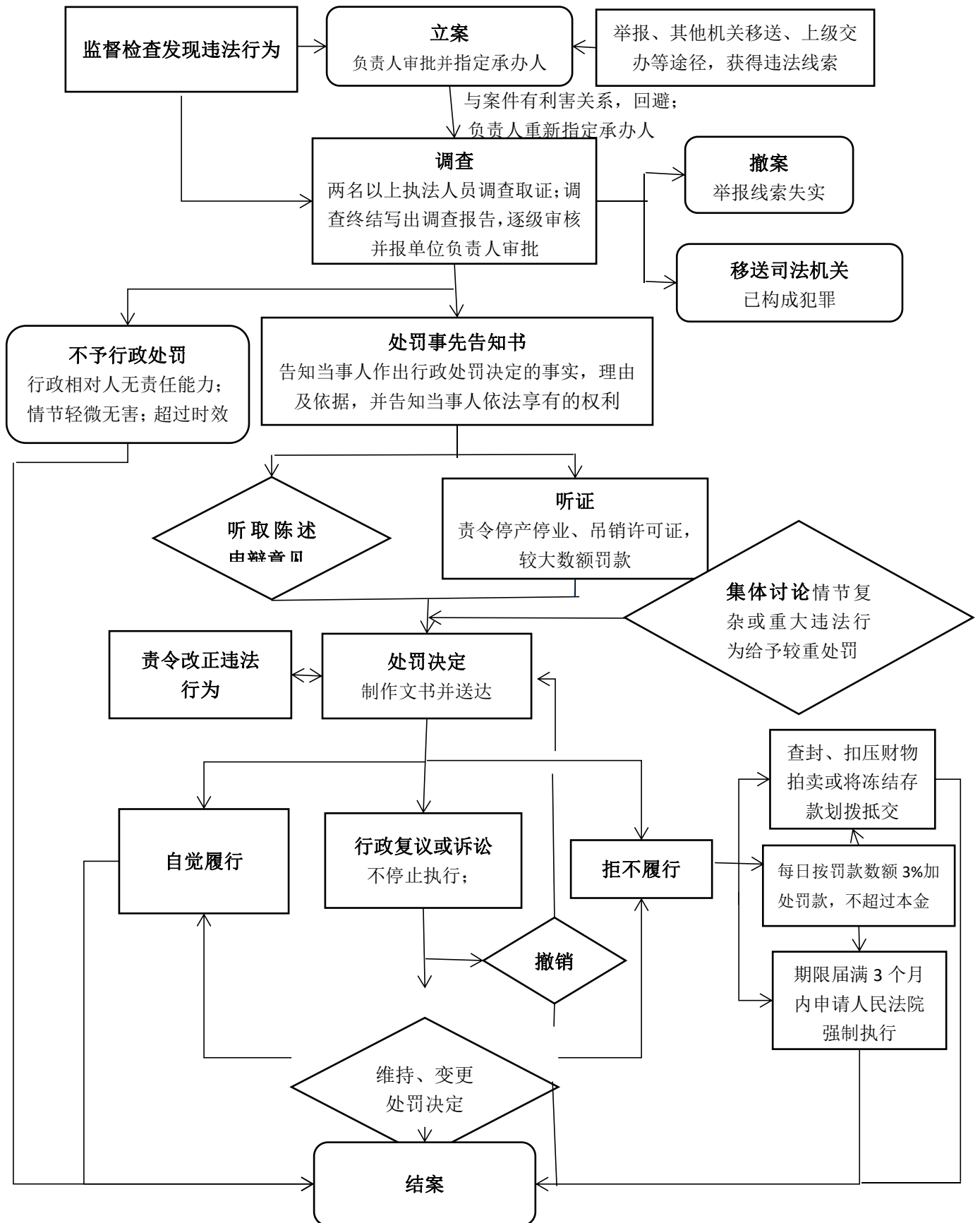


对擅自出版、印刷、复制、发行出版物行为的监管执法流程图

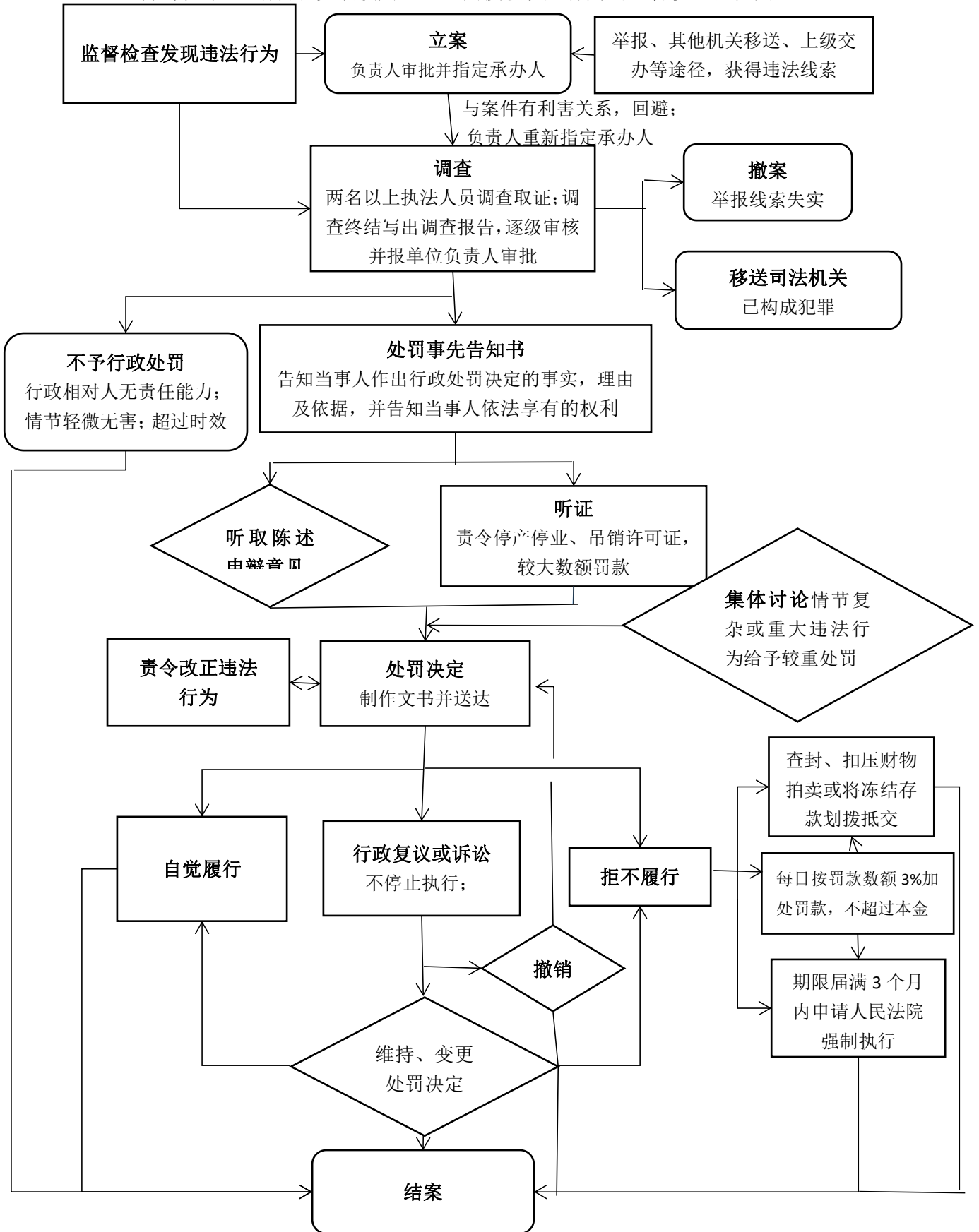




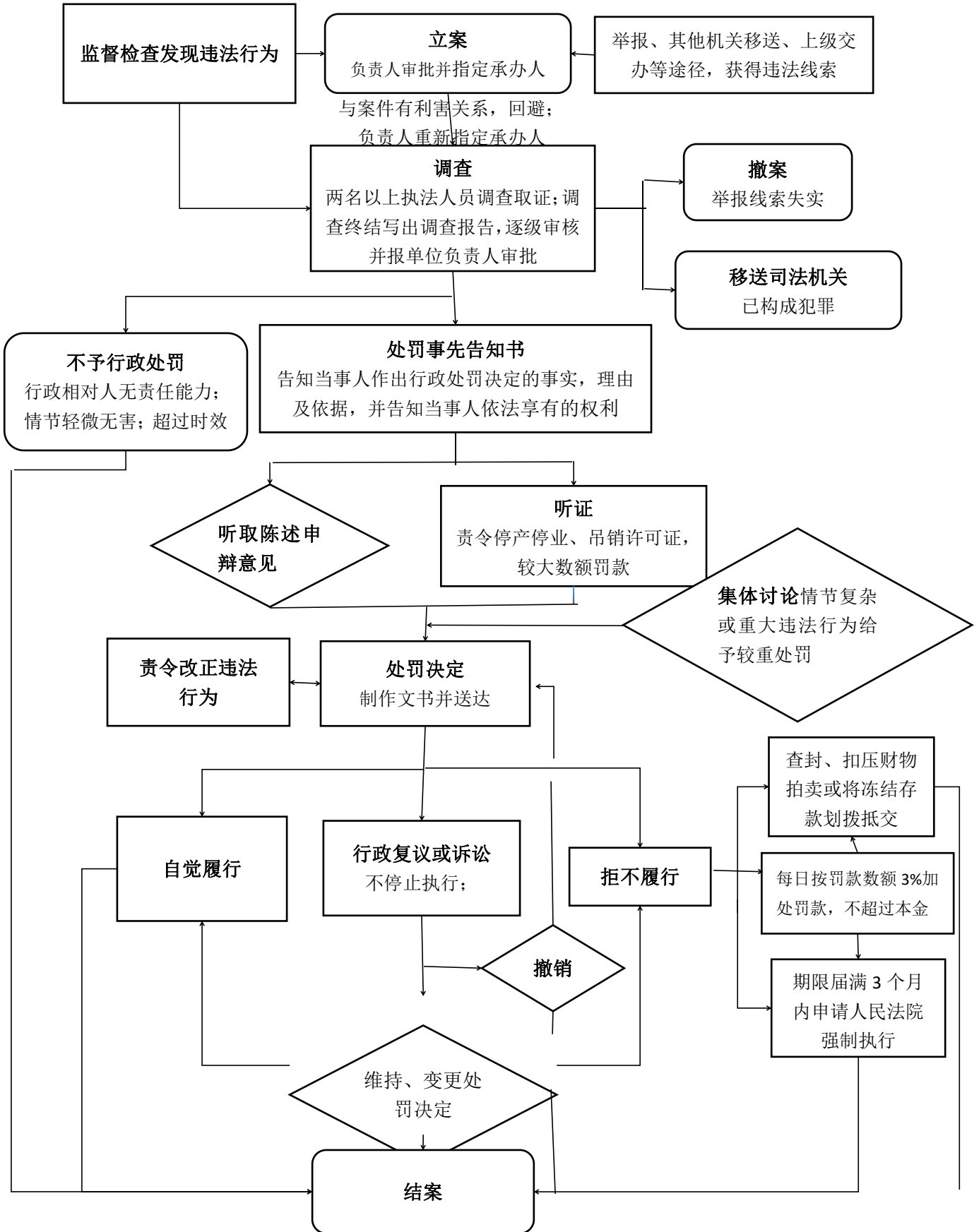
对未经许可经营旅行社业务，旅行社出租、出借、非法转让旅行社业务经营许可证，旅行社以及分社、服务网点超范围经营等违法行为的监管执法流程图



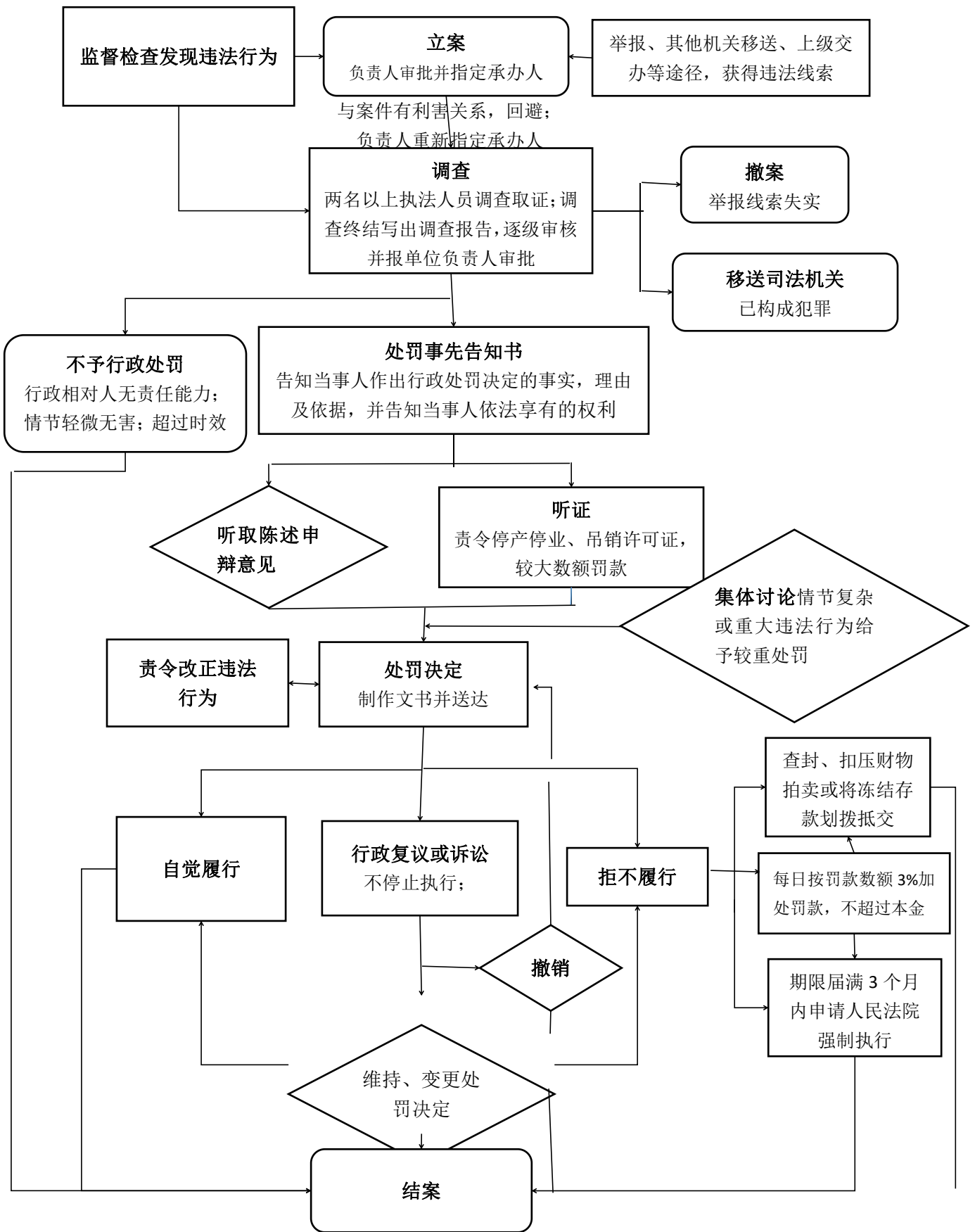
对擅自生产、销售和安装使用卫星地面接收设施行为的监管执法流程图



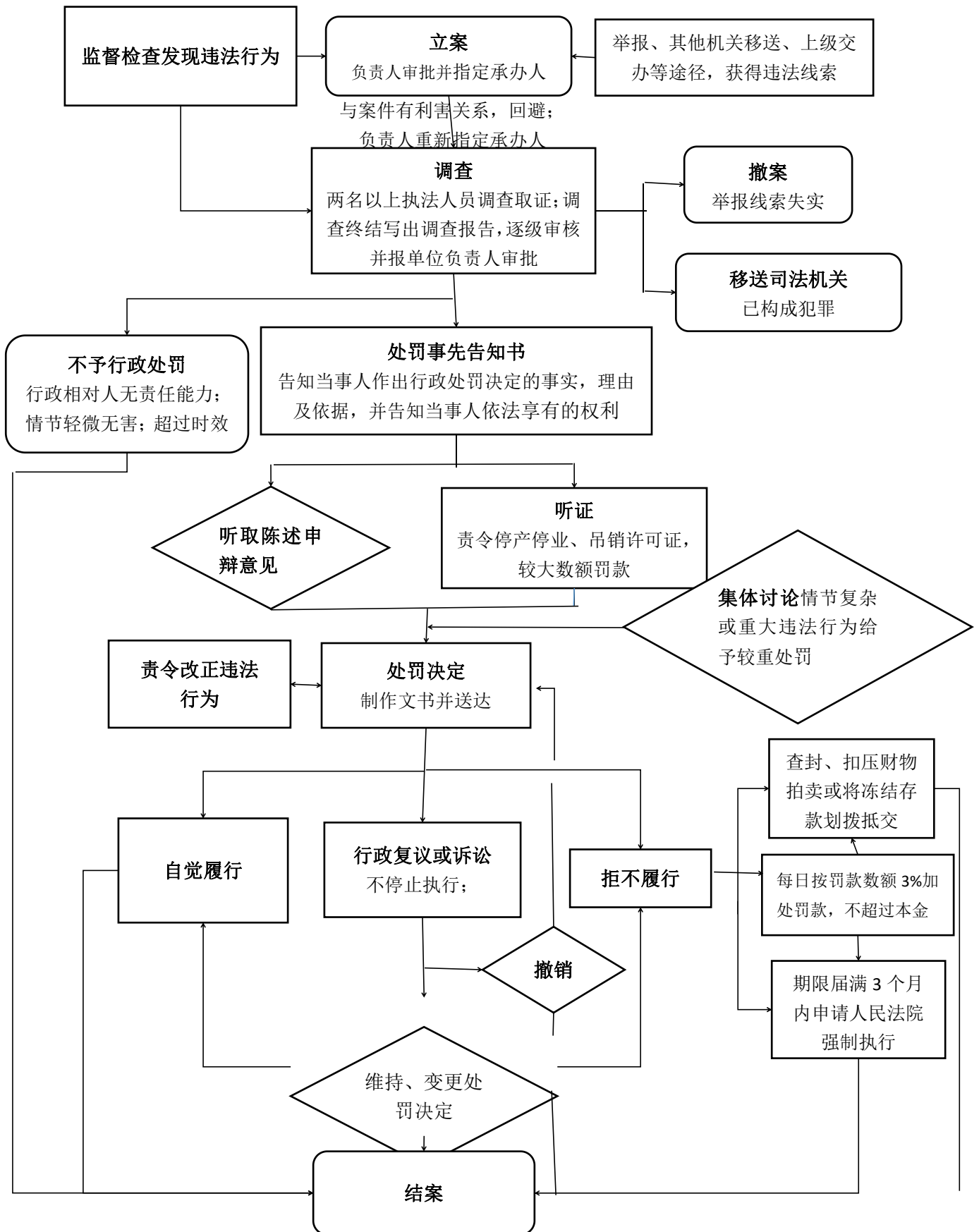
# 对非法生产经营烟花爆竹行为的监管执法流程图



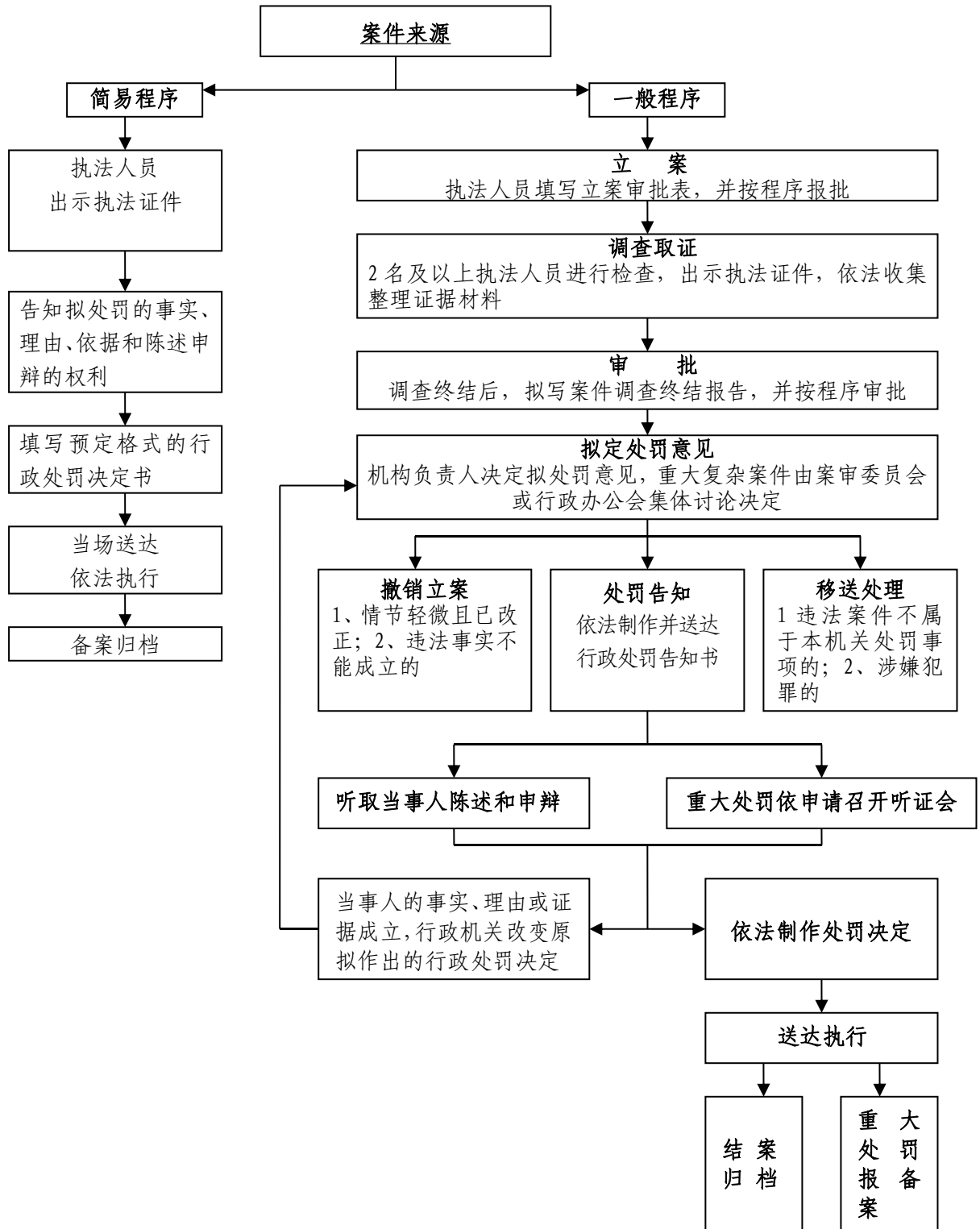
# 对非煤矿山的监管执法流程图



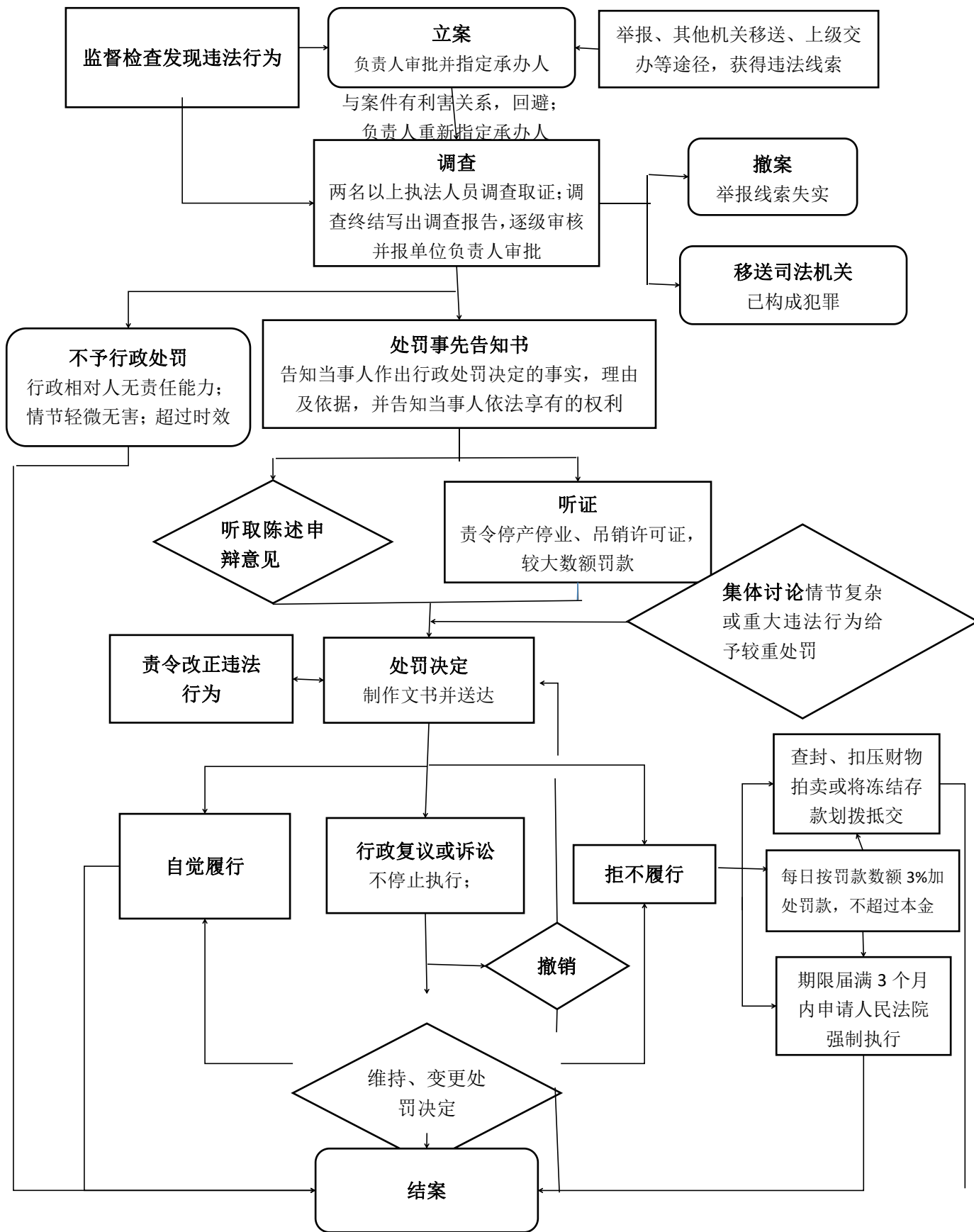
# 危险化学品安全生产监管执法流程图



# 道路交通领域安全监管执法流程图



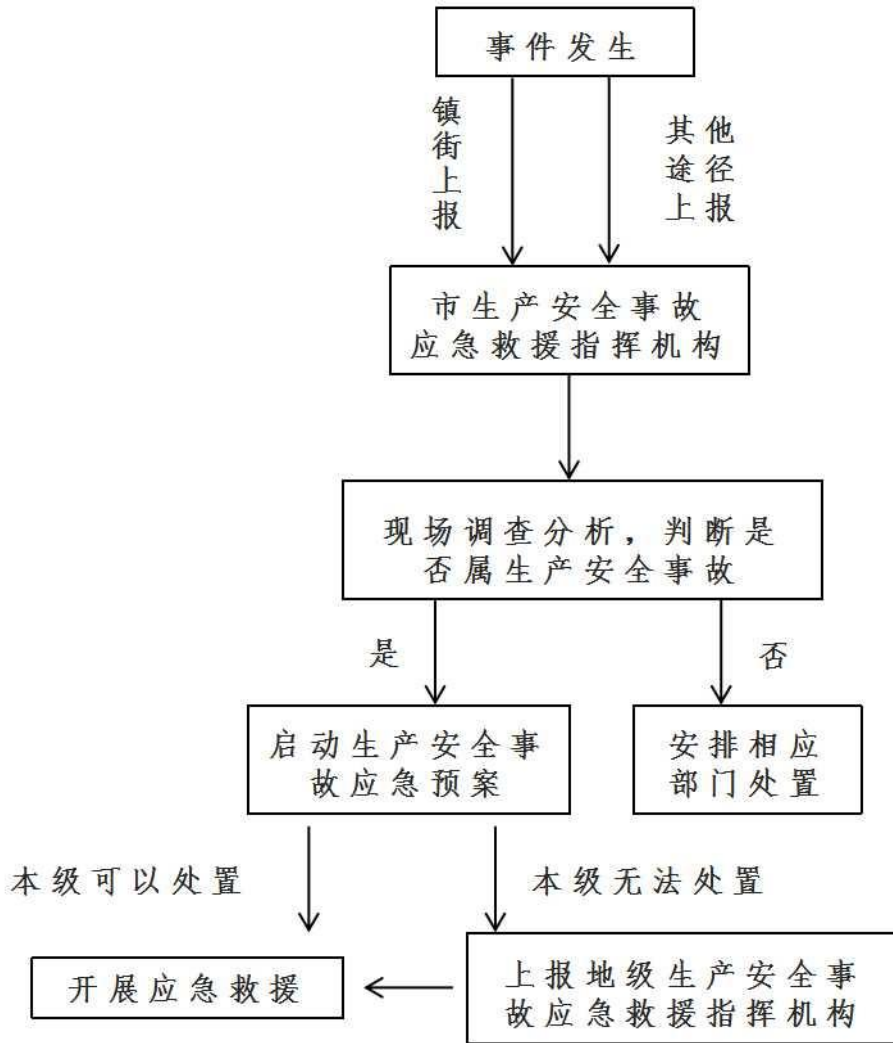
# 商贸流通领域安全监管执法流程图



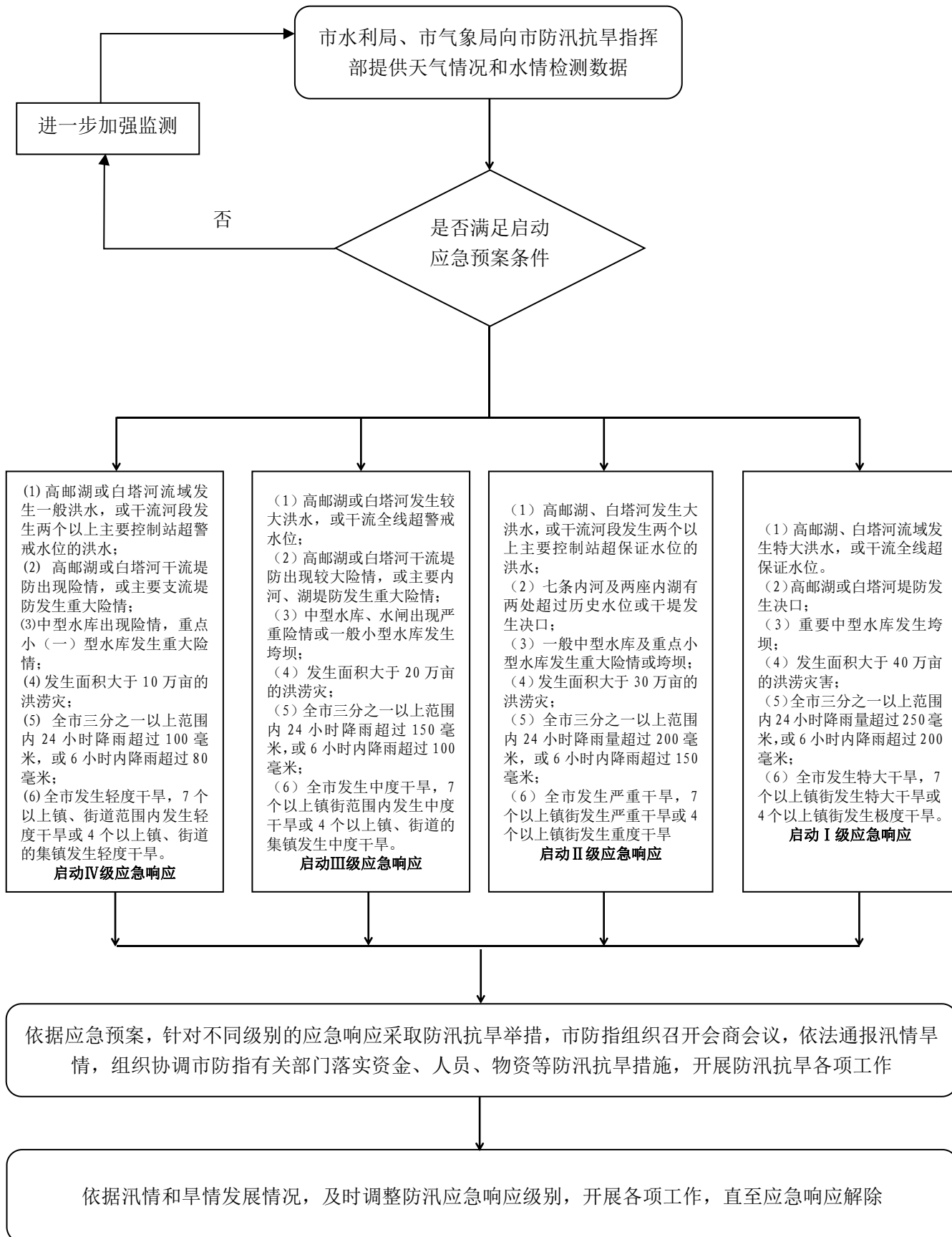




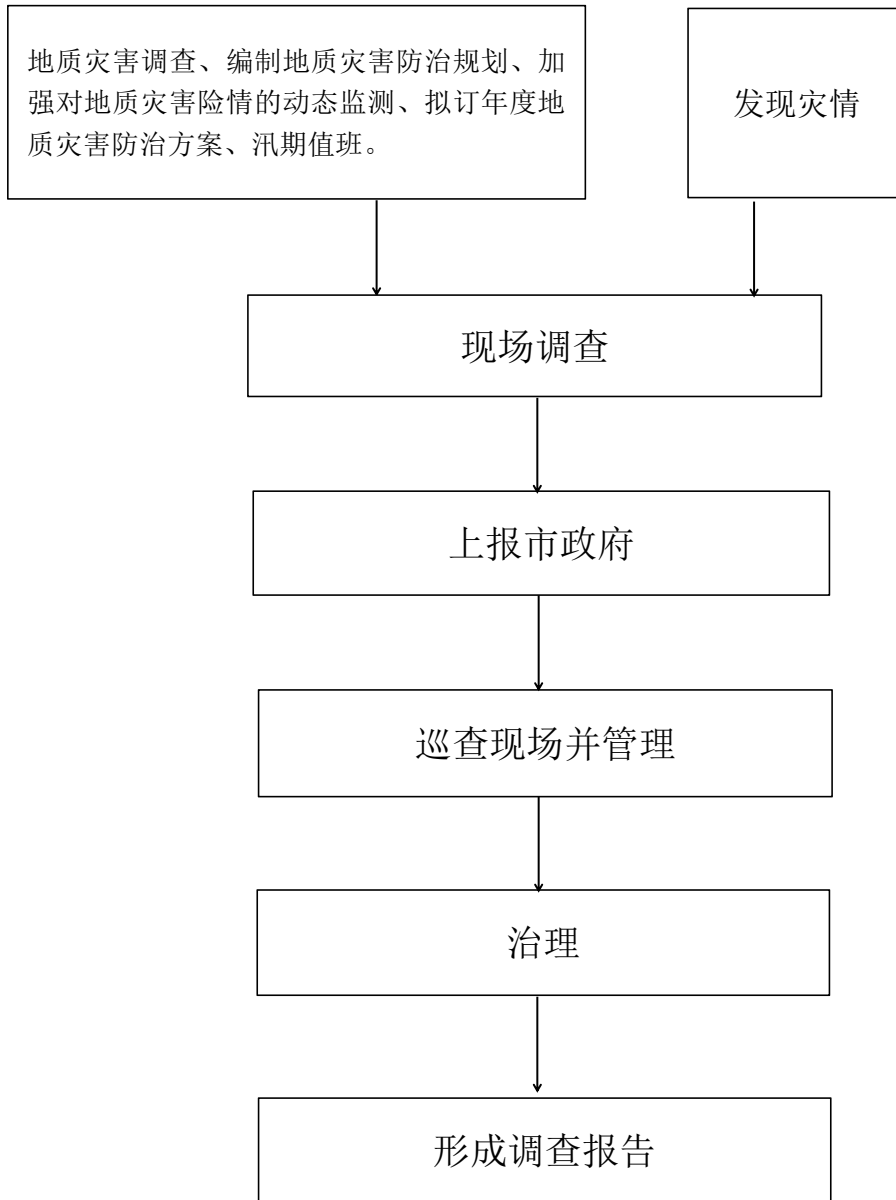
# 安全生产事故应急救援流程图



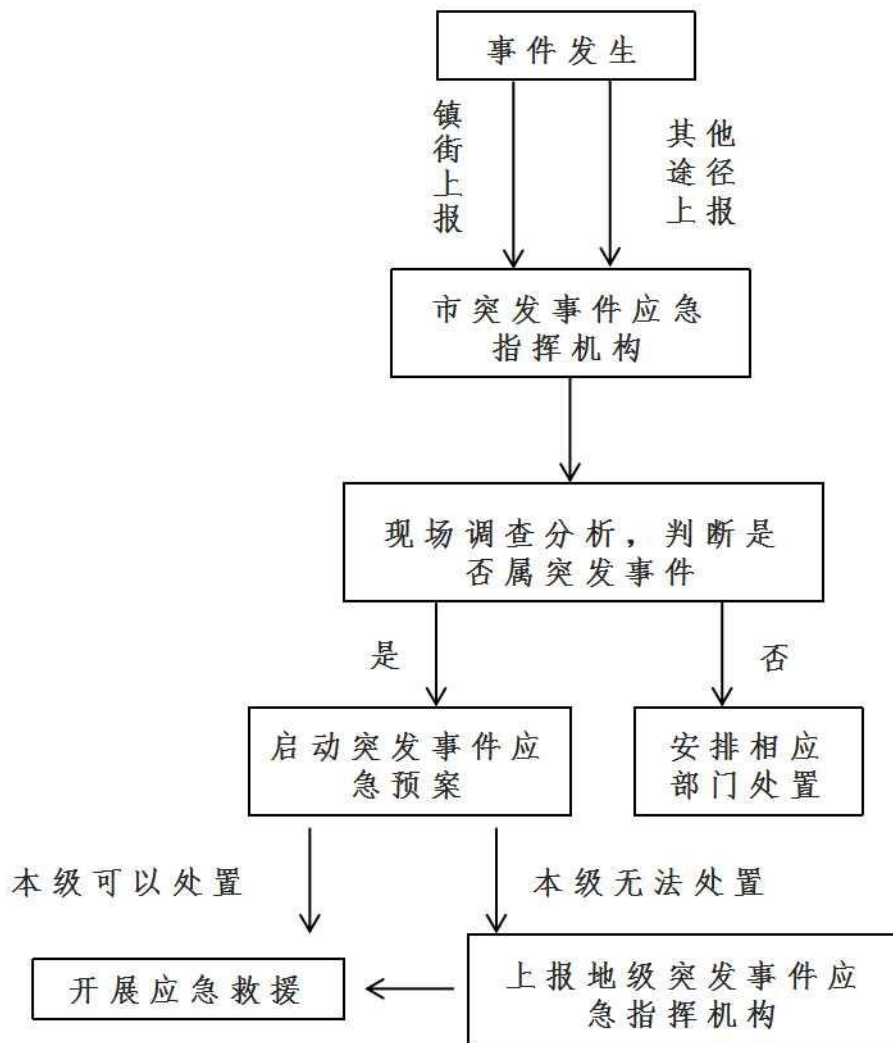
# 防汛抗旱组织实施流程图



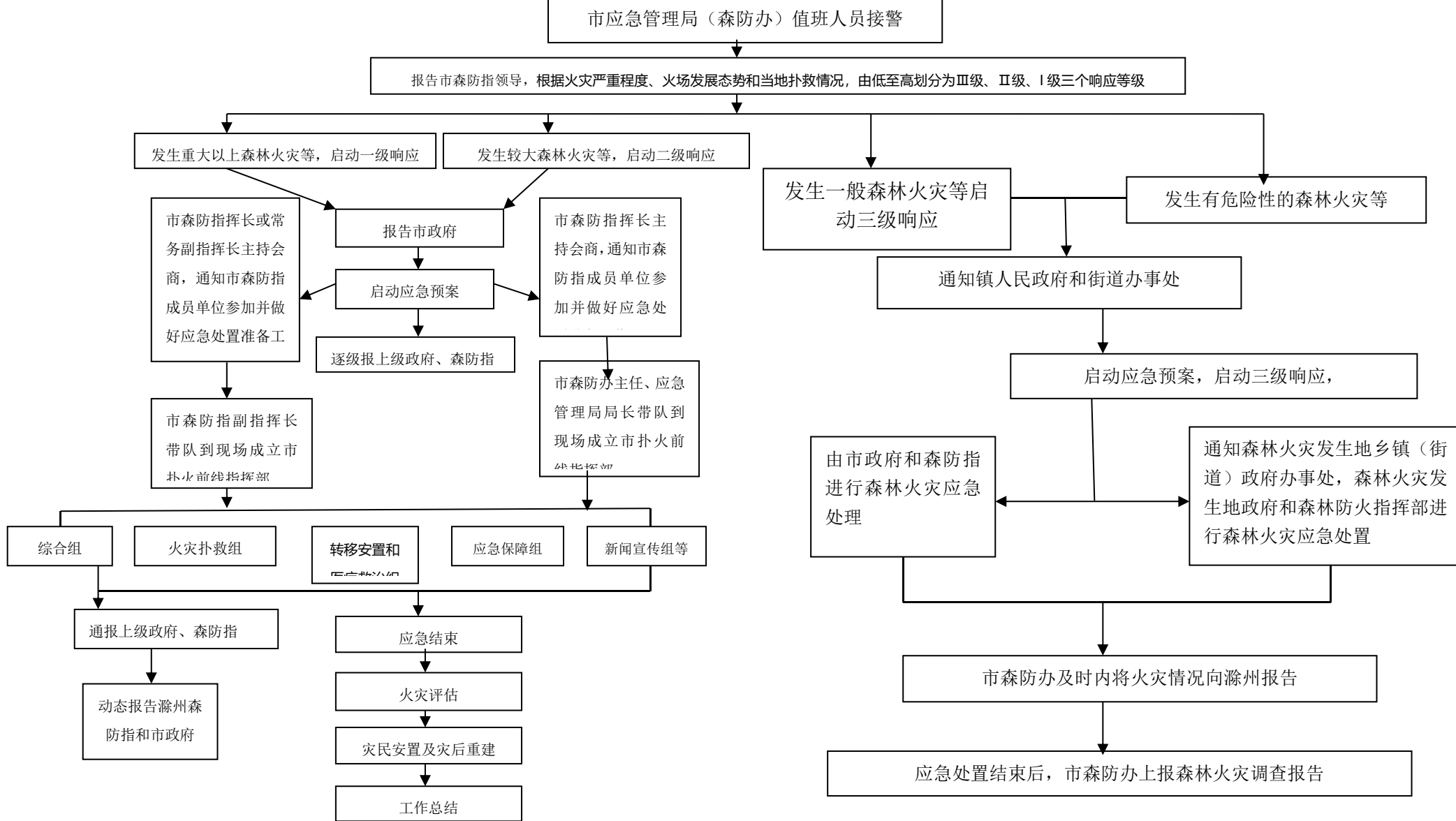
# 地质灾害防治组织实施流程图



# 突发事件应急处置流程图

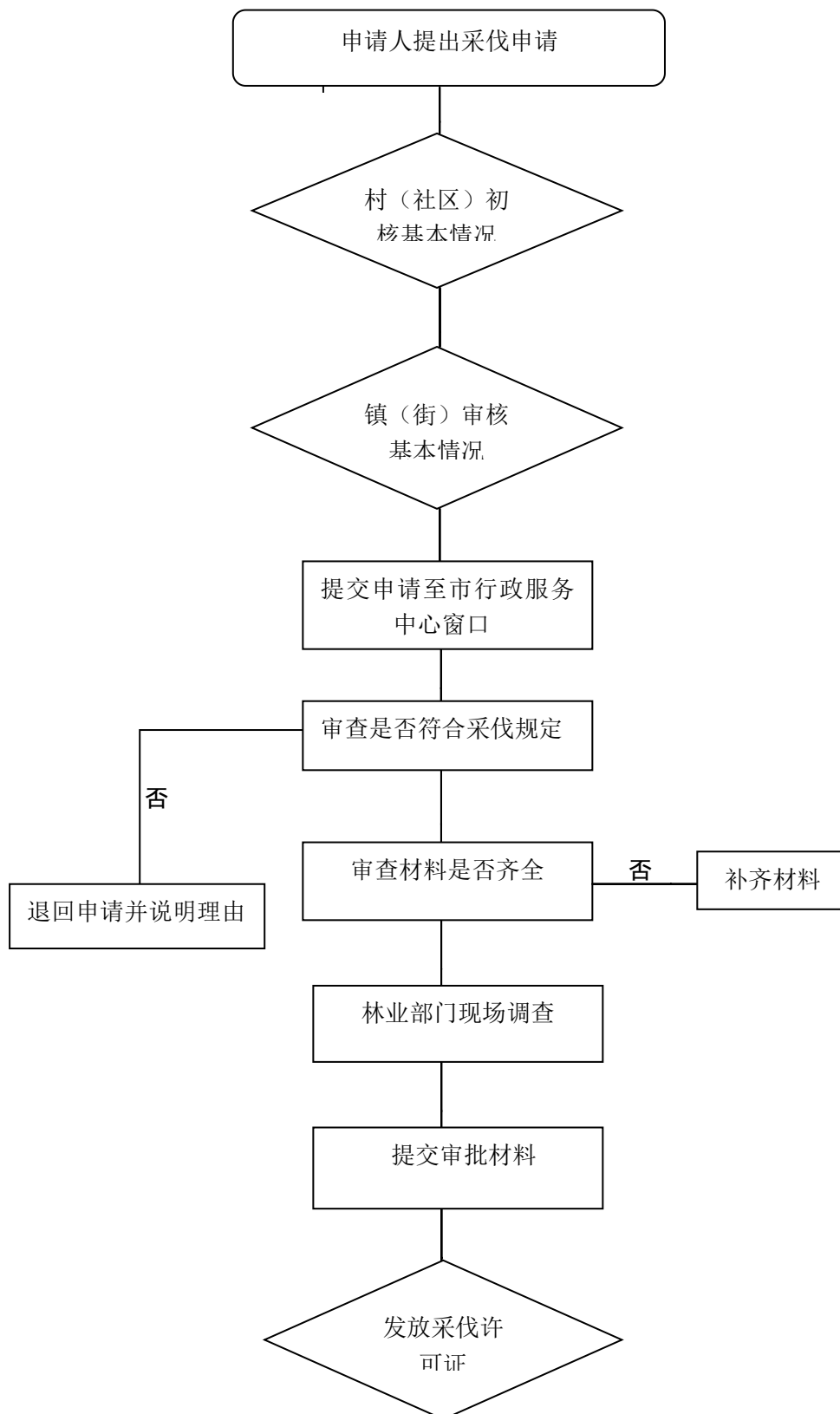


# 森林火灾隐患排查和火灾扑救流程图

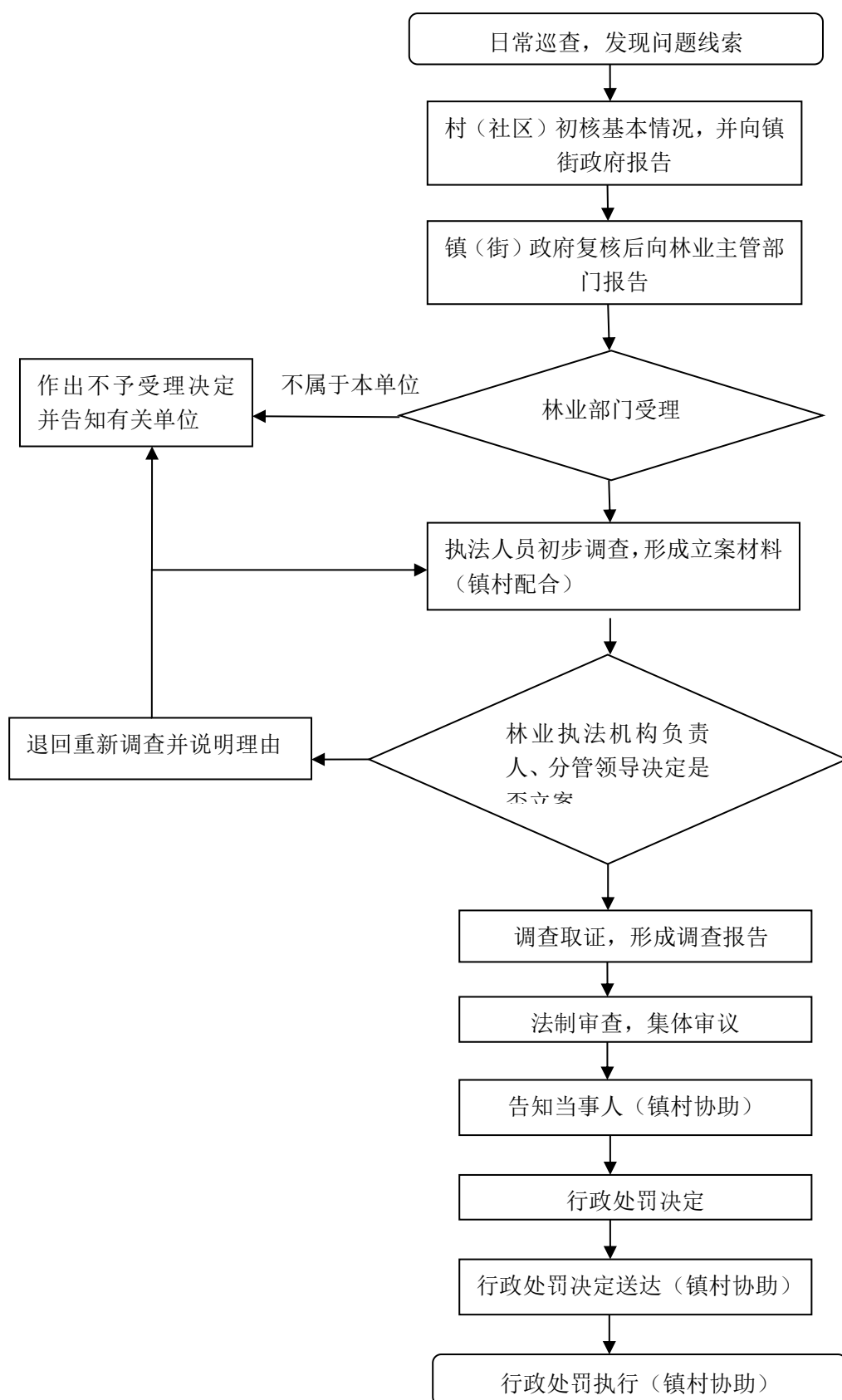


市自然资源和规划局（林业局）承担森林火灾隐患排查行业主管职责；市应急管理局负责综合协调并承担森防办日常工作等。

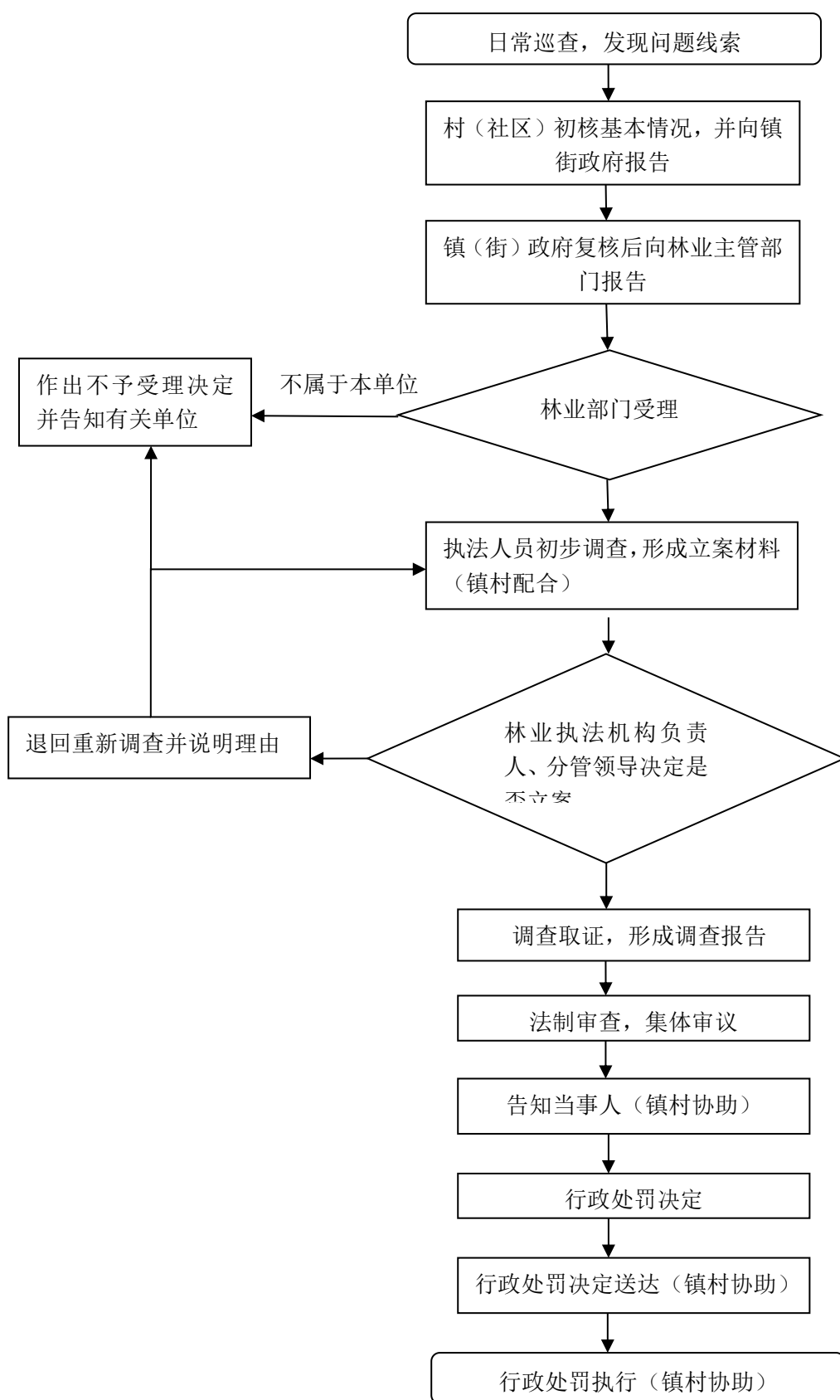
# 受委托对农村居民采伐自留山和个人承包集体林地上 林木的采伐许可证的审核发放流程图



# 林业有害生物防治的监管执法流程图

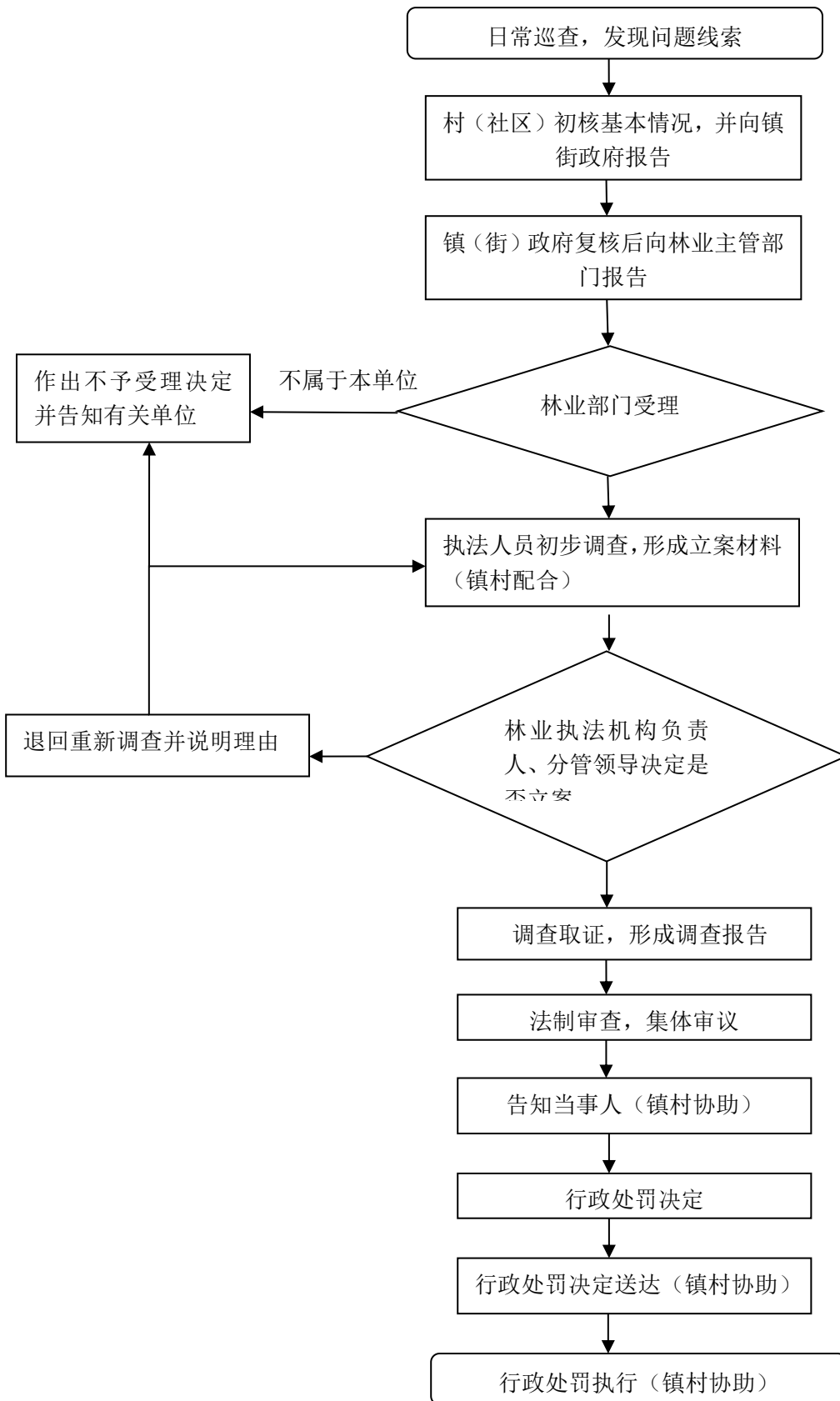


# 林木采伐的审批后监管流程图

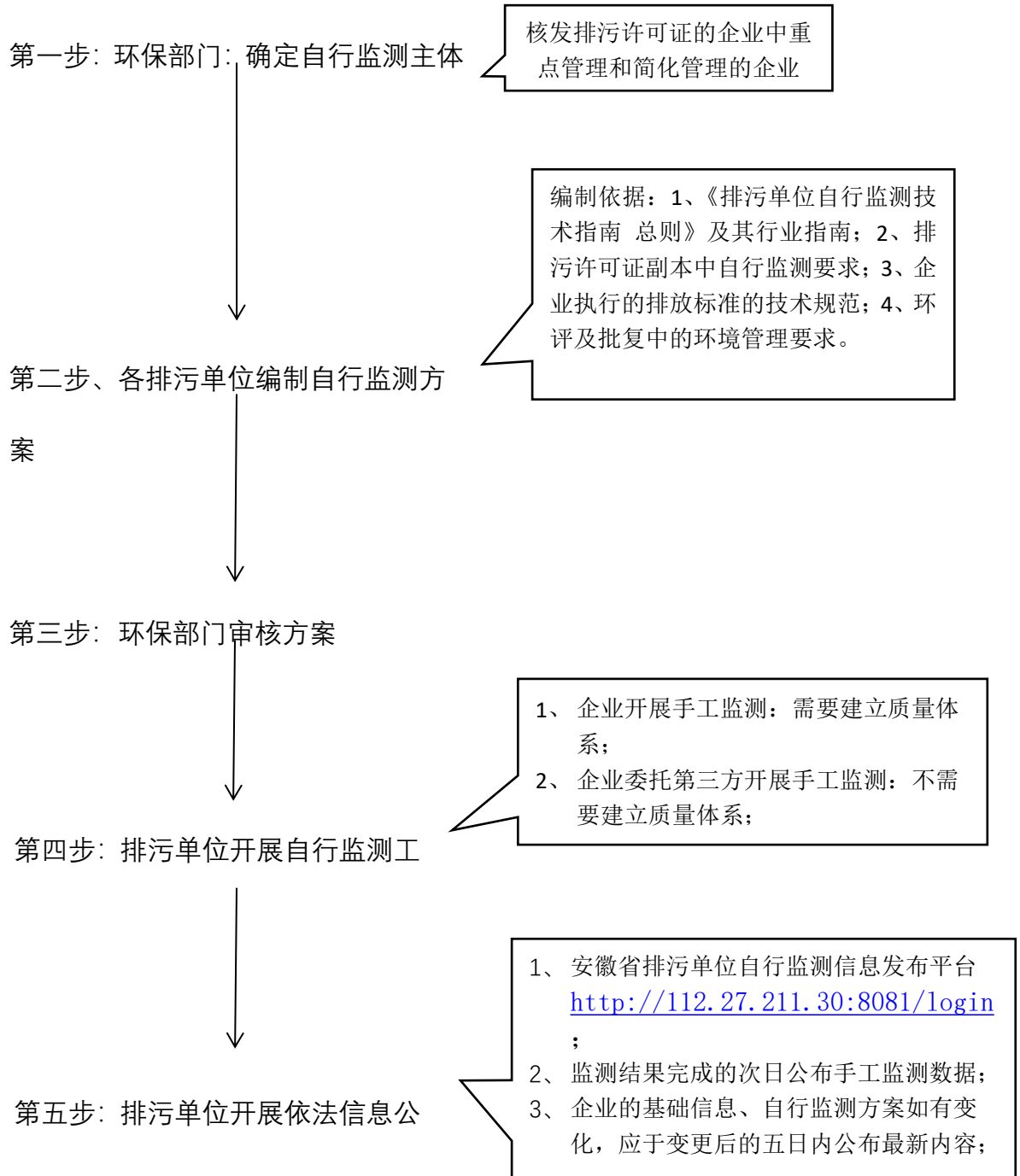




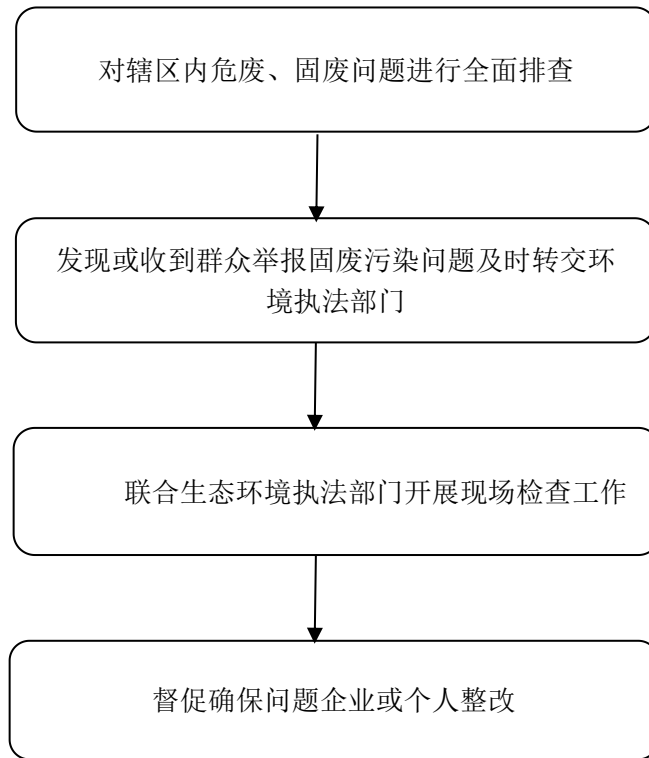
# 非法狩猎野生动物监管执法流程图



# 河流流域及相关涉水企业的水质监测和污染防治

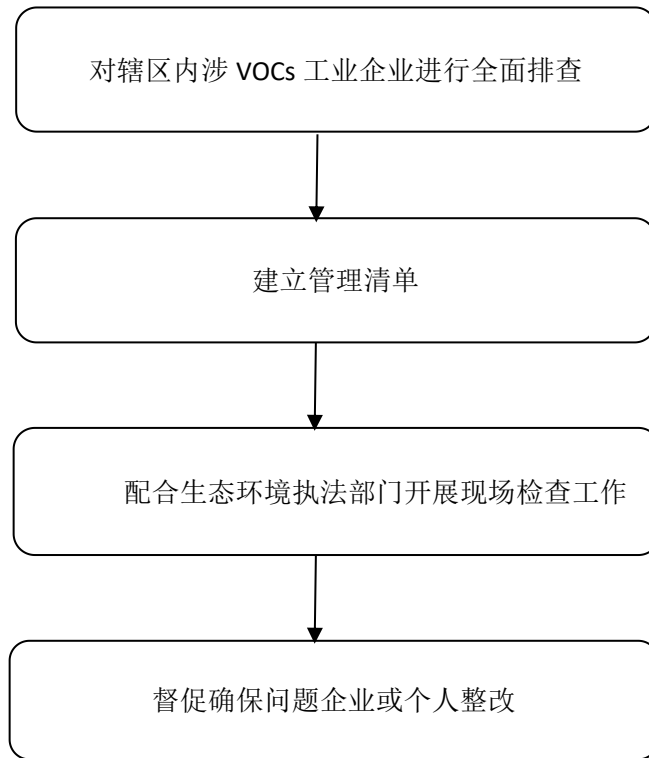


## 危废、固废源头管理和排查整治



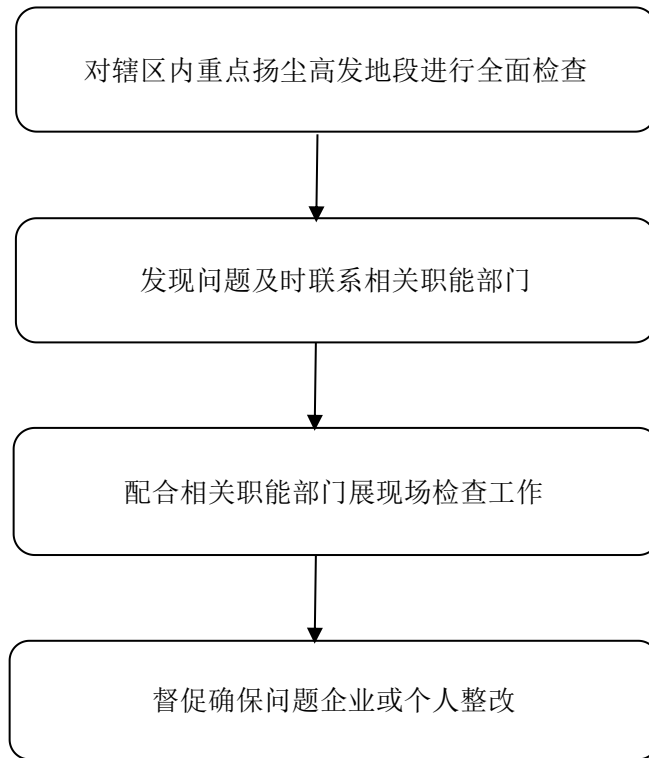
注：流程图图形含义：圆角矩形：表示开始或结束；矩形：表示处理过程；菱形：表示决策或判断。

## VOCs（挥发性有机物）污染深度治理



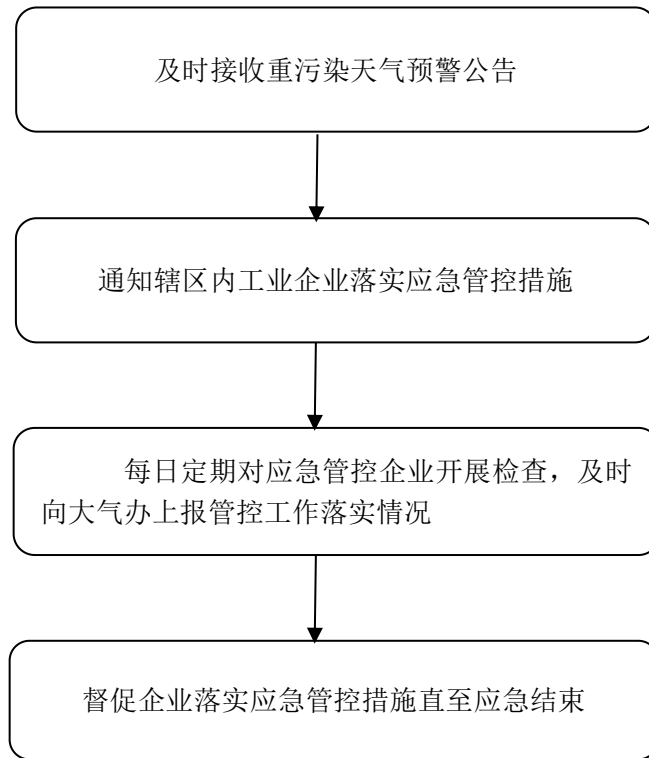
注：流程图图形含义：圆角矩形：表示开始或结束；矩形：表示处理过程；菱形：表示决策或判断。

# 扬尘综合治理



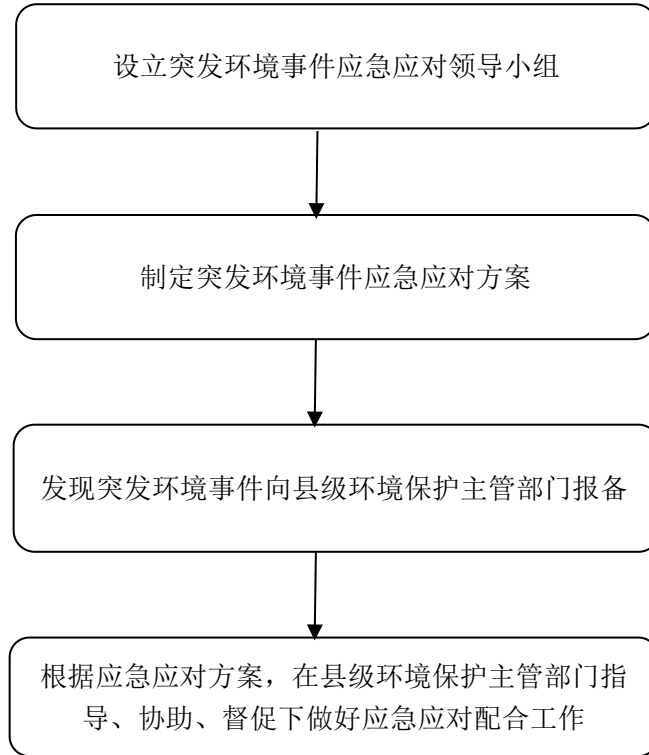
注：流程图图形含义：圆角矩形：表示开始或结束；矩形：表示处理过程；菱形：表示决策或判断。

## 重污染天气应急应对

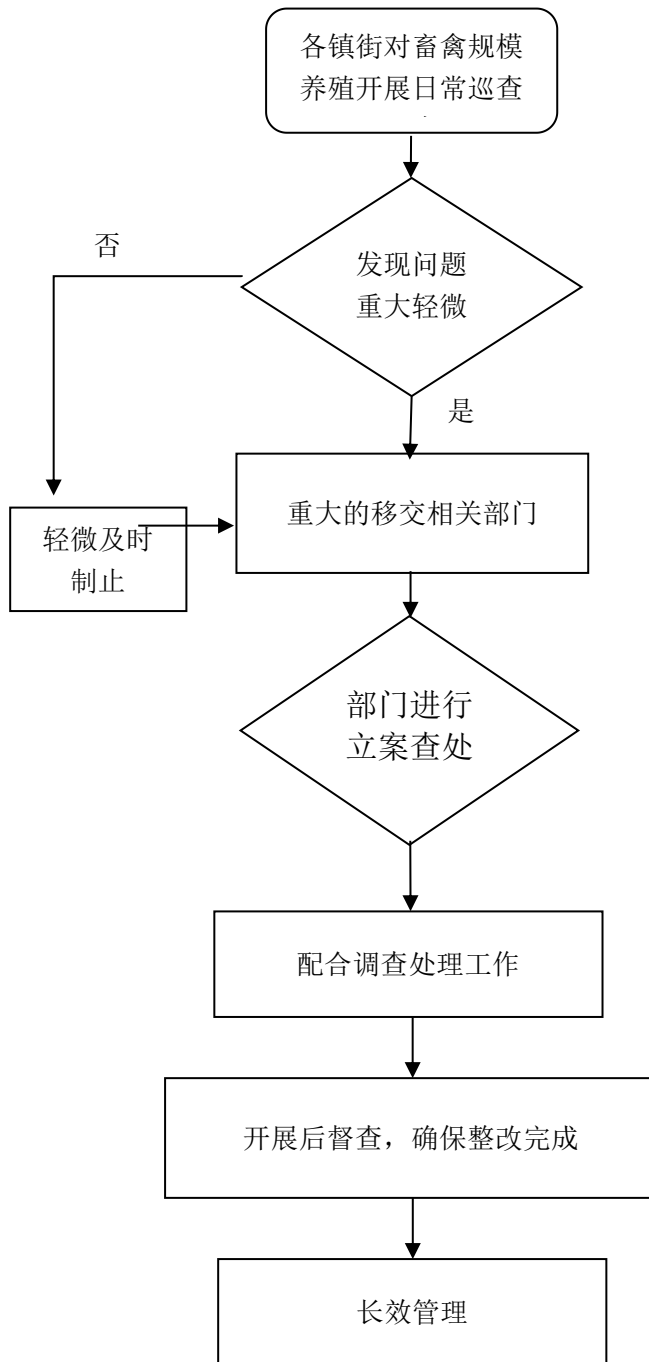


注：流程图图形含义：圆角矩形：表示开始或结束；矩形：表示处理过程；菱形：表示决策或判断。

## 突发环境事件应急应对流程图示例

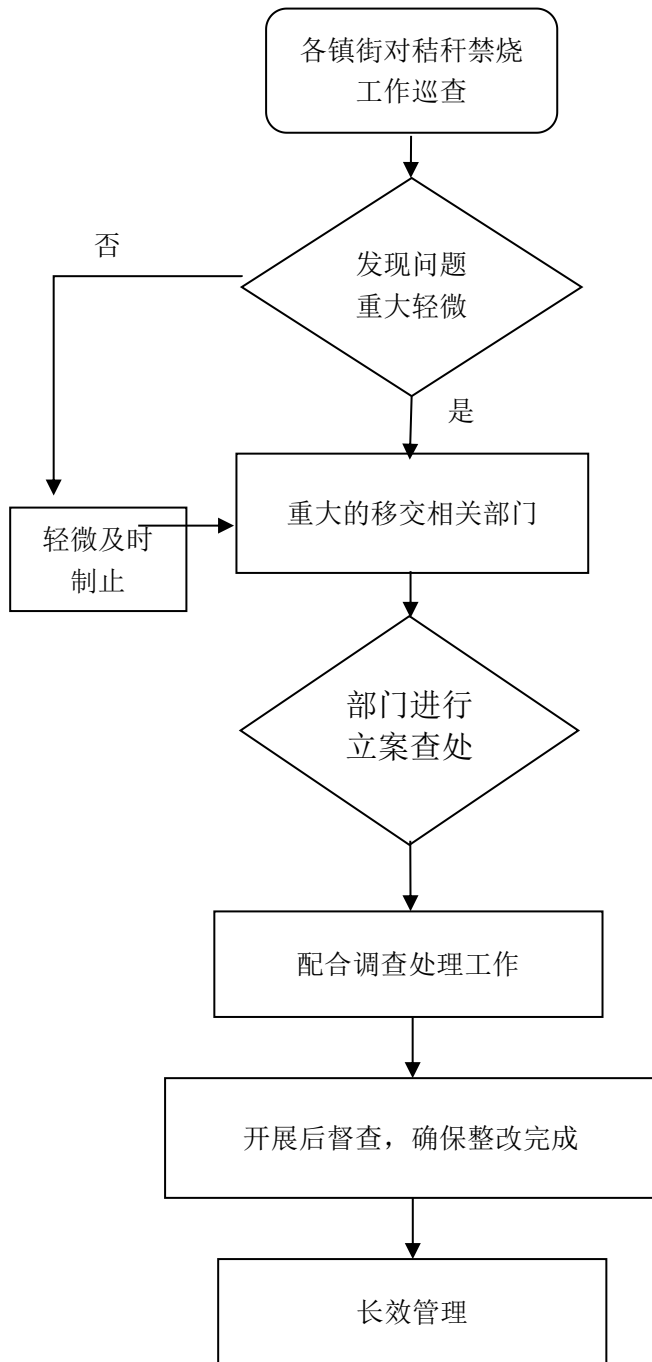


## 畜禽规模养殖污染整治工作流程图示例





## 露天秸秆禁烧专项整治工作流程图示例



对企业生产加工产生噪声、建筑工地夜间施工噪声、  
交通运输噪声、高音广播喇叭噪声扰民行为的监管执  
法流程图示例

